



特殊規格油壓缸 | 空壓缸
油空壓自動化系統
各式機械油缸 | 油壓零件
油壓系統油壓機械

 www.yonken.com.tw



Taiwantrade
Supplier
Business
Information
Verification

www.tuv.com
ID: 0000652243



YM 方型鑄件油壓缸	2
YH 方型油壓缸	9
YKH 方型油壓缸	18
YS 小型圓型油壓缸	29
YR 圓型油壓缸	35
YCR 圓型油壓缸	42
YHS 圓型油壓缸	46
YHR 大型圓型油壓缸	50
YT 薄型油壓缸	56
YMT 感應薄型油壓缸	59
ACC 配件	63

YM

YH

YKH

YS

YR

YCR

YHS

YHR

YT

YMT

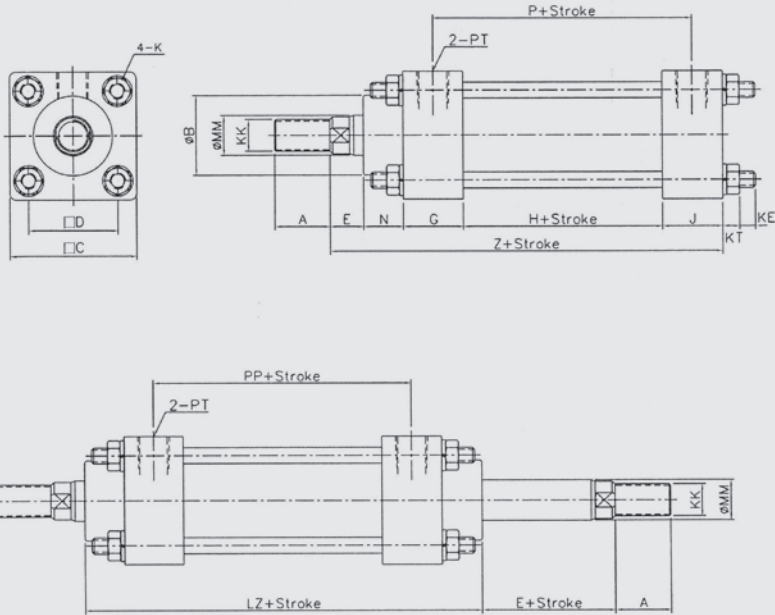
ACC

YM

方型鑄件油壓缸

SD Type

70 kg/cm² 方型鑄件油壓缸



尺寸規格	A	ØB	ØMM	KK	C	D	E	G	H	J	K	KT	KE	LZ	N	P	PP	PT	Z
Ø30	28	30	16	M14* P1.5	50	34	13	25	50	25	M8* P1.25	8.5	8	130	15	75	75	1/4	128
Ø40	28	40	20	M16* P1.5	64	45	17	30	50	30	M8* P1.25	8.5	8	150	20	80	80	3/8	147
Ø50	28	45	20	M16* P1.5	70	50	17	30	50	28	M10* P1.25	10.5	10	150	20	79	80	3/8	145
Ø63	40	55	25	M22* P1.5	85	60	20	31	50	31	M10* P1.25	10.5	10	172	30	81	81	3/8	162
Ø80	40	62	30	M26* P1.5	106	74	20	37	55	35	M12* P1.5	13	10	193	32	91	92	1/2	179
Ø100	45	78	35	M30* P1.5	122	89	20	37	80	37	M14* P1.5	14.5	10	218	32	117	117	1/2	206
Ø125	55	85	50	M40* P2.0	147	110	25	40	80	40	M16* P1.5	17	10	222	31	120	120	1/2	216

YM

YH

YKH

YS

YR

YCR

YHS

YHR

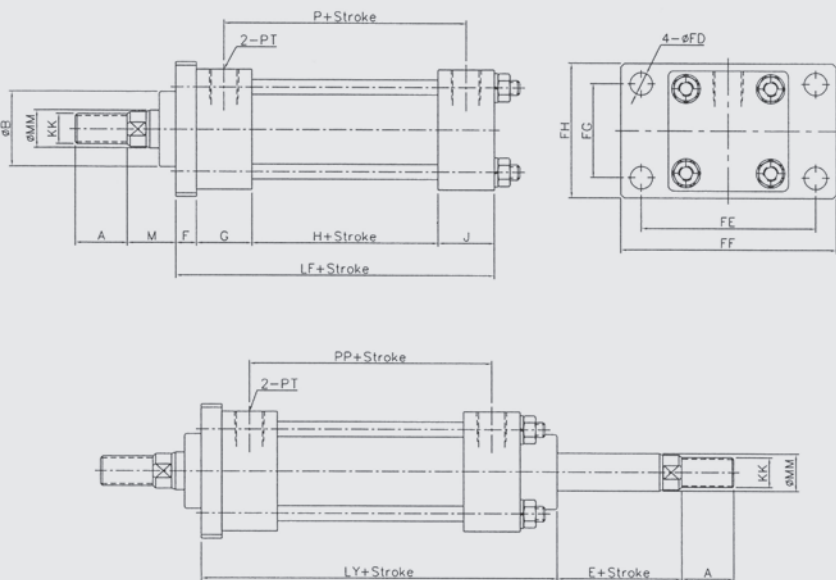
YT

YMT

ACC

70 kgf/cm² 方型鑄件油壓缸

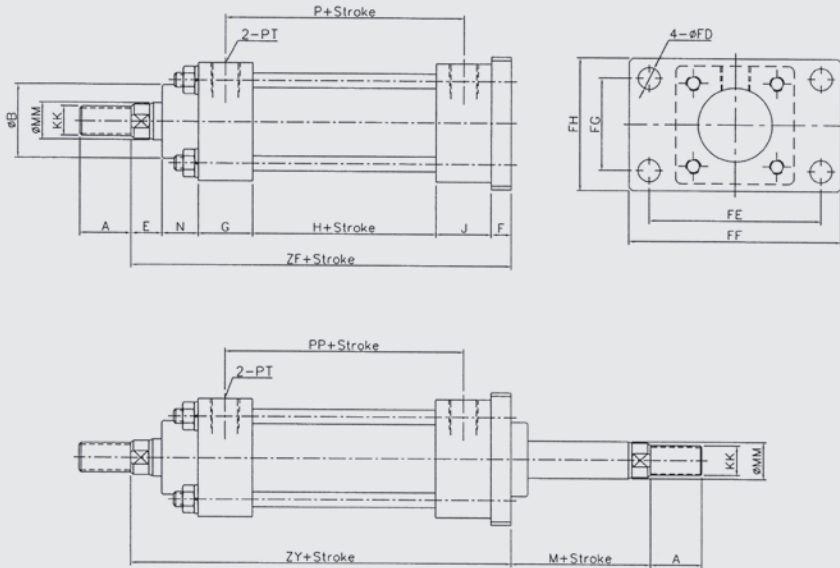
FA Type



尺寸規格	A	ØB	ØMM	KK	E	F	FD	FE	FF	FG	FH	G	H	J	LF	LY	M	P	PP	PT
Ø30	28	30	16	M14* P1.5	13	11	9	80	105	34	52	25	50	25	111	126	17	75	75	1/4
Ø40	28	40	20	M16* P1.5	17	11	12	93	115	50	72	30	50	30	121	141	26	80	80	3/8
Ø50	28	45	20	M16* P1.5	17	11	12	93	115	50	72	30	50	28	119	141	26	79	80	3/8
Ø63	40	55	25	M22* P1.5	20	14	14	117	140	60	90	31	50	31	126	156	36	81	81	3/8
Ø80	40	62	30	M26* P1.5	20	20	14	152	180	75	105	37	55	35	147	181	32	91	92	1/2
Ø100	45	78	35	M30* P1.5	20	20	16	158	200	90	125	37	80	37	174	206	32	117	117	1/2
Ø125	55	85	50	M40* P2.0	25	20	18	184	225	110	153	40	80	40	180	211	36	120	120	1/2

70 kg/cm² 方型鑄件油壓缸

FB Type



尺寸 規格	尺寸																				
	A	ØB	ØMM	KK	E	F	FD	FE	FF	FG	FH	G	H	J	N	M	P	PP	PT	ZF	ZY
Ø30	28	30	16	M14* P1.5	13	11	9	80	105	34	52	25	50	25	15	17	75	75	1/4	139	139
Ø40	28	40	20	M16* P1.5	17	11	12	93	115	50	72	30	50	30	20	26	80	80	3/8	158	158
Ø50	28	45	20	M16* P1.5	17	11	12	93	115	50	72	30	50	28	20	26	79	80	3/8	156	158
Ø63	40	55	25	M22* P1.5	20	14	14	117	140	60	90	31	50	31	30	36	81	81	3/8	176	176
Ø80	40	62	30	M26* P1.5	20	20	14	152	180	75	105	37	55	35	32	32	91	92	1/2	199	201
Ø100	45	78	35	M30* P1.5	20	20	16	158	200	90	125	37	80	37	32	32	117	117	1/2	226	226
Ø125	55	85	50	M40* P2.0	25	20	18	184	225	110	153	40	80	40	31	36	120	120	1/2	236	236

YM

YH

YKH

YS

YR

YCR

YHS

YHR

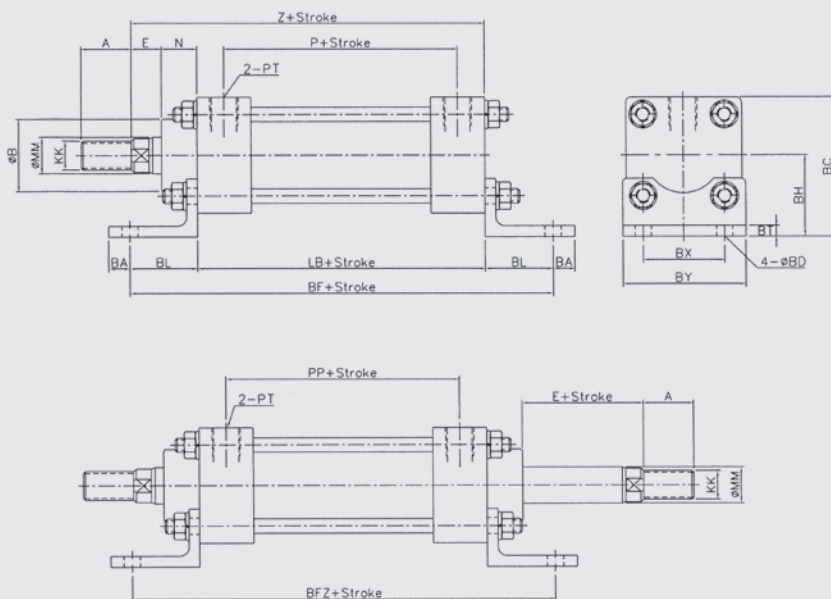
YT

YMT

ACC

70 kg/cm² 方型鑄件油壓缸

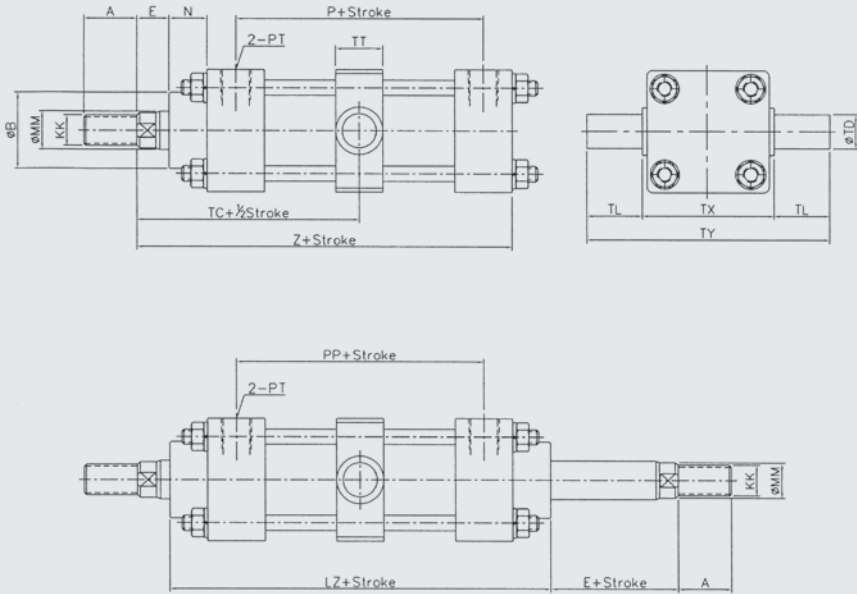
LB Type



尺寸規格	A	ØB	ØMM	KK	BA	BC	BD	BF	BFZ	BH	BL	BT	BX	BY	E	LB	N	P	PP	PT	Z
Ø30	28	30	16	M14* P1.5	10	60	9	156	156	35	28	5	34	53	13	100	15	75	75	1/4	128
Ø40	28	40	20	M16* P1.5	12	77	9	186	186	45	38	6	45	68	17	110	20	80	80	3/8	147
Ø50	28	45	20	M16* P1.5	12	81	11	184	186	46	38	6	50	73	17	108	20	79	80	3/8	145
Ø63	40	55	25	M22* P1.5	12	96	11	188	188	53	38	6	60	88	20	112	30	81	81	3/8	162
Ø80	40	62	30	M26* P1.5	14	113	13	199	201	60	36	6	74	105	20	127	32	91	92	1/2	179
Ø100	45	78	35	M30* P1.5	27	139	16	250	250	78	48	9	89	127	20	154	32	117	117	1/2	206
Ø125	55	85	50	M40* P2.0	24	161	18	262	262	87	51	9	110	150	25	160	31	120	120	1/2	216

TC Type

70 kg/cm² 方型鑄件油壓缸



尺寸規格	A	ØB	ØMM	KK	E	LZ	N	P	PP	PT	TC	TD	TL	TT	TX	TY	Z
Ø30	28	30	16	M14* P1.5	13	130	15	75	75	1/4	78	16	16	25	55	87	128
Ø40	28	40	20	M16* P1.5	17	150	20	80	80	3/8	92	18	29	25	69	127	147
Ø50	28	45	20	M16* P1.5	17	150	20	79	80	3/8	92	20	35	28	83	153	145
Ø63	40	55	25	M22* P1.5	20	172	30	81	81	3/8	106	25	36	32	98	170	162
Ø80	40	62	30	M26* P1.5	20	193	32	91	92	1/2	116.5	28	35	35	124	194	179
Ø100	45	78	35	M30* P1.5	20	218	32	117	117	1/2	129	30	40	38	142	222	206
Ø125	55	85	50	M40* P2.0	25	222	31	120	120	1/2	136	32	40	40	175	255	216

YM

YH

YKH

YS

YR

YCR

YHS

YHR

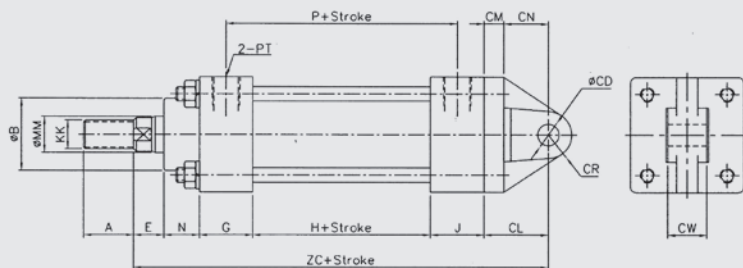
YT

YMT

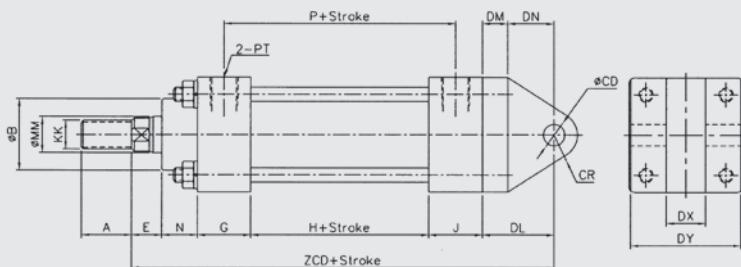
ACC

70 kg/cm² 方型鑄件油壓缸

CA Type



CB Type



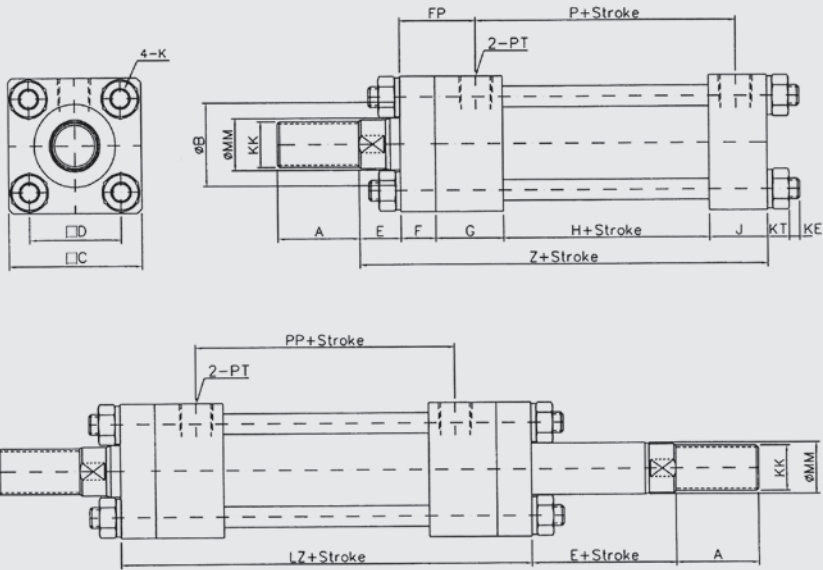
規格	尺寸																							
	A	ØB	ØMM	KK	CD	CL	CM	CN	CR	CW	DL	DM	DN	DX	DY	E	N	G	H	J	P	PT	ZC	ZCD
Ø30	28	30	16	M14* P1.5	10	31	11	20	10	16	34	12	22	16	48	13	15	25	50	25	75	1/4	159	162
Ø40	28	40	20	M16* P1.5	12	36	11	25	13	22	40	14	26	22	62	17	20	30	50	30	80	3/8	183	187
Ø50	28	45	20	M16* P1.5	12	36	12	24	13	22	40	14	26	22	68	17	20	30	50	28	79	3/8	181	185
Ø63	40	55	25	M22* P1.5	20	50	19	31	24	30	50	18	32	30	81	20	30	31	50	31	81	3/8	212	212
Ø80	40	62	30	M26* P1.5	30	68	18	50	30	30	68	18	50	31	61	20	32	37	55	35	91	1/2	247	247
Ø100	45	78	35	M30* P1.5	35	73	18	55	35	35	73	18	55	36	76	20	32	37	80	37	117	1/2	279	279
Ø125	55	85	50	M40* P2.0	35	73	18	55	35	35	73	18	55	36	76	25	31	40	80	40	120	1/2	289	289

YH

方型油壓缸

SD Type

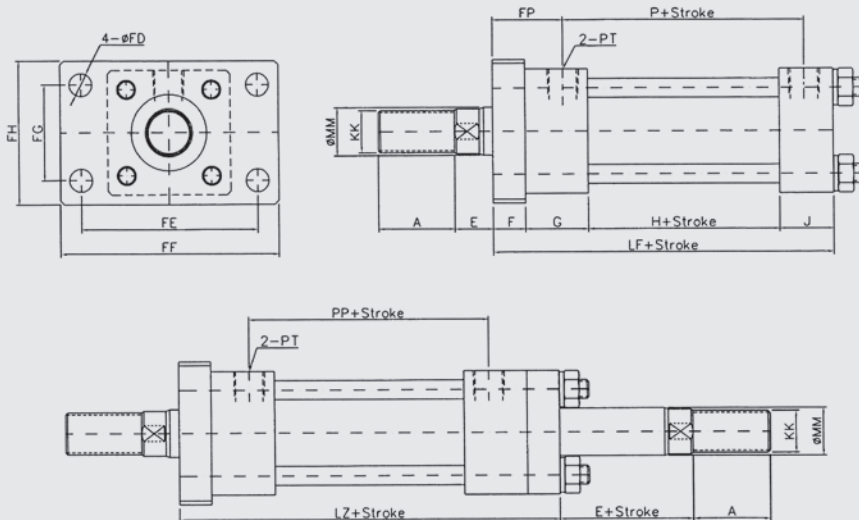
140 kg/cm² 方型油壓缸



尺寸规格	A	ØB	ØMM	KK	C	D	E	F	FP	G	H	J	K	KT	KE	LZ	P	PP	PT	Z
Ø40	40	40	25	M22* P1.5	65	45	20	17	37	33	50	28	M10* P1.25	10.5	10	150	76	78	3/8	148
Ø50	40	50	30	M26* P1.5	80	56	20	17	40	38	55	30	M12* P1.5	13	10	165	85	82	3/8	160
Ø63	45	50	35	M30* P1.5	90	62	20	17	32	38	55	30	M14* P1.5	14.5	10	165	85	87	3/8	160
Ø80	45	60	40	M30* P1.5	110	80	20	20	40	38	75	35	M16* P1.5	17	10	191	107	94	1/2	188
Ø100	55	80	50	M40* P2.0	131	95	25	20	45.5	41	90	37	M18* P1.5	19.5	10	212	123.5	110	1/2	213
Ø125	70	90	60	M50* P2.0	162	122	35	30	66	57	100	47	M22* P1.5	23.5	10	274	143	121	3/4	269
Ø150	80	110	80	M70* P2.0	195	144	35	30	66	60	90	50	1"-8UNC	30	5	270	135	126	3/4	265
Ø180	100	135	100	M90* P2.0	235	175	35	40	75	65	120	55	1, 1/4"-7UNC	35	10	330	172	149	1	315
Ø200	100	135	100	M90* P2.0	262	193	40	40	78	65	120	60	1, 1/4"-7UNC	35	10	330	175	176	1	325

FA Type

140 kg/cm² 方型油壓缸



尺寸规格	A	ØMM	KK	E	F	FD	FE	FF	FG	FH	FP	G	H	J	LF	LZ	P	PP	PT
Ø40	40	25	M22* P1.5	20	17	12	93	115	50	75	37	33	50	28	128	150	76	78	3/8
Ø50	40	30	M26* P1.5	20	17	14	110	150	56	85	40	38	55	30	140	165	85	82	3/8
Ø63	45	35	M30* P1.5	20	17	14	126	155	68	95	32	38	55	30	140	165	85	87	3/8
Ø80	45	40	M30* P1.5	20	20	18	152	190	75	120	40	38	75	35	168	191	107	94	1/2
Ø100	55	50	M40* P2.0	25	20	20	180	220	100	140	45.5	41	90	37	188	212	123.5	110	1/2
Ø125	70	60	M50* P2.0	35	30	24	222	280	122	170	66	57	100	47	234	274	143	121	3/4
Ø150	80	80	M70* P2.0	35	30	28	260	310	155	206	66	60	90	50	230	270	135	126	3/4
Ø180	100	100	M90* P2.0	35	40	35	315	375	188	250	75	65	120	55	280	330	172	149	1
Ø200	100	100	M90* P2.0	40	40	35	355	425	207	272	78	65	120	60	285	330	175	176	1

YM

YH

YKH

YS

YR

YCR

YHS

YHR

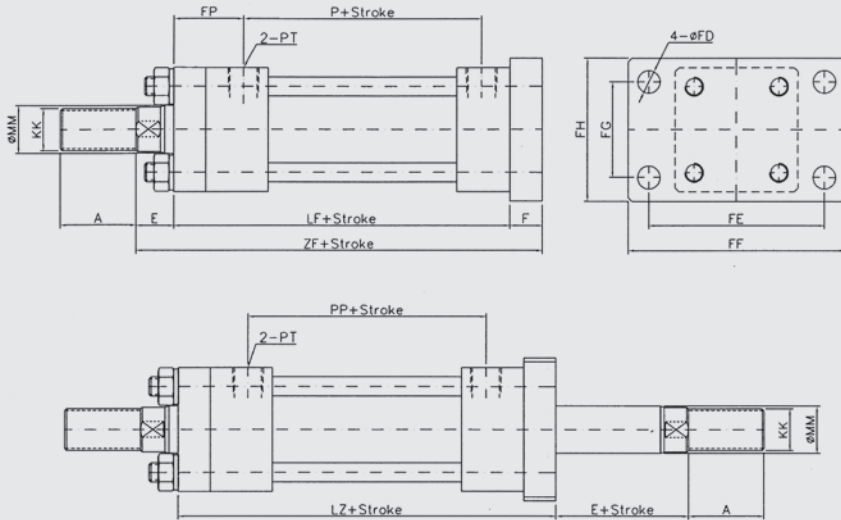
YT

YMT

ACC

FB Type

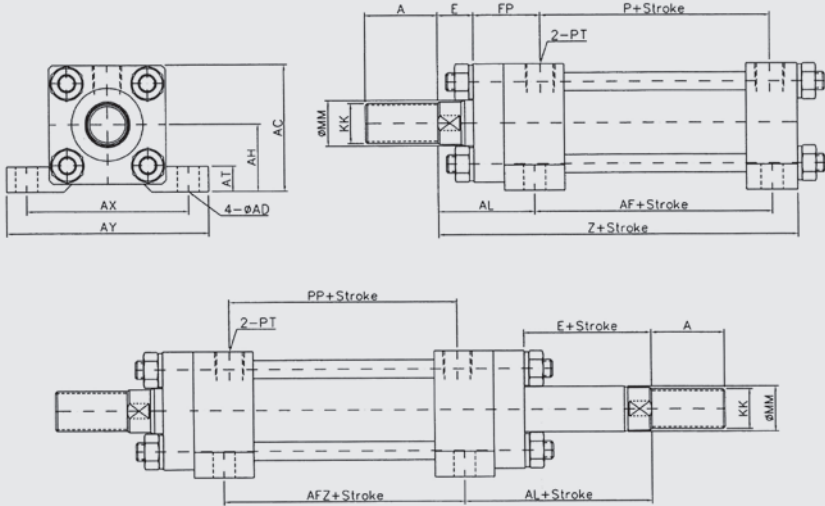
140 kg/cm² 方型油壓缸



尺寸规格	A	ØMM	KK	E	F	FD	FE	FF	FG	FH	FP	LF	LZ	P	PP	PT	ZF
Ø40	40	25	M22* P1.5	20	17	12	93	115	50	75	37	128	150	76	78	3/8	165
Ø50	40	30	M26* P1.5	20	17	14	110	150	56	85	40	140	165	85	82	3/8	177
Ø63	45	35	M30* P1.5	20	17	14	126	155	68	95	32	140	165	85	87	3/8	177
Ø80	45	40	M30* P1.5	20	20	18	152	190	75	120	40	168	191	107	94	1/2	208
Ø100	55	50	M40* P2.0	25	20	20	180	220	100	140	45.5	188	212	123.5	110	1/2	233
Ø125	70	60	M50* P2.0	35	30	24	222	280	122	170	66	234	274	143	121	3/4	299
Ø150	80	80	M70* P2.0	35	30	28	260	310	155	206	66	230	270	135	126	3/4	295
Ø180	100	100	M90* P2.0	35	40	35	315	375	188	250	75	280	330	172	149	1	355
Ø200	100	100	M90* P2.0	40	40	35	355	425	207	272	78	285	330	175	176	1	365

LA Type

140 kg/cm² 方型油壓缸



尺寸规格	A	ØMM	KK	E	AC	AD	AF	AFZ	AH	AL	AT	AX	AY	FP	P	PP	PT	Z
Ø40	40	25	M22* P1.5	20	69.5	12	80.5	83	37	53.5	14	90	112	37	76	78	3/8	148
Ø50	40	30	M26* P1.5	20	85	14	89	93	45	56	17	115	140	40	85	82	3/8	160
Ø63	45	35	M30* P1.5	20	95	14	89	93	50	56	19	128	156	32	85	87	3/8	160
Ø80	45	40	M30* P1.5	20	115	18	111.5	113	60	59	25	152	184	40	107	94	1/2	188
Ø100	55	50	M40* P2.0	25	135.5	20	129	131	70	65.5	27	178	210	45.5	123.5	110	1/2	213
Ø125	70	60	M50* P2.0	35	171	24	152	157	90	93.5	30	230	280	66	143	121	3/4	269
Ø150	80	80	M70* P2.0	35	208	28	145	150	113	95	35	270	325	66	135	126	3/4	265
Ø180	100	100	M90* P2.0	35	260.5	35	180	185	143	107.5	45	330	395	75	172	149	1	315
Ø200	100	100	M90* P2.0	40	292	35	182.5	185	161	112.5	50	360	430	78	175	176	1	325

YM

YH

YKH

YS

YR

YCR

YHS

YHR

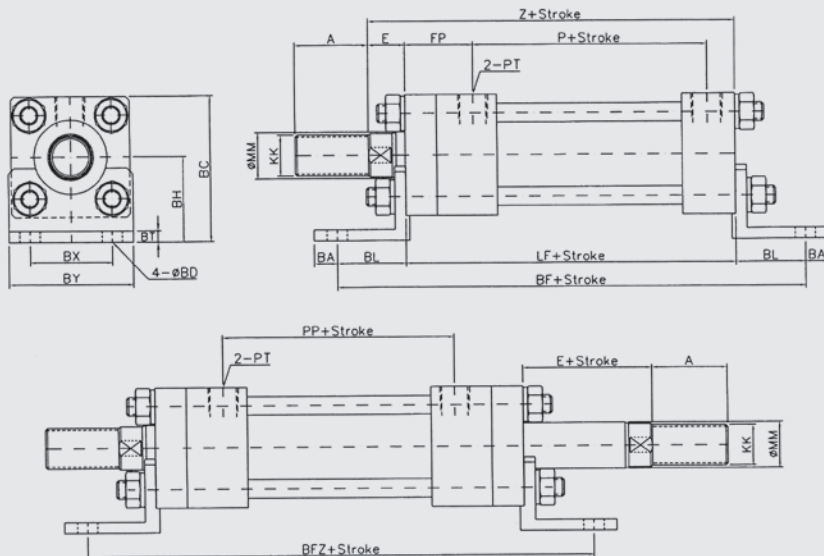
YT

YMT

ACC

LB Type

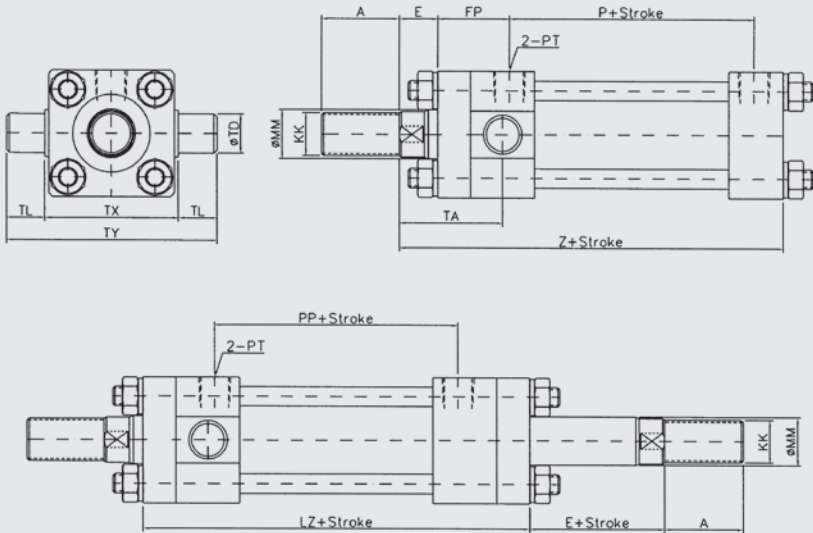
140 kg/cm² 方型油壓缸



尺寸规格	A	ØMM	KK	E	BA	BC	BD	BF	BFZ	BH	BL	BT	BX	BY	FP	LF	P	PP	PT	Z
Ø40	40	25	M22* P1.5	20	12.5	78.5	11	203	225	46	37.5	6	45	68	37	128	76	78	3/8	148
Ø50	40	30	M26* P1.5	20	22	94	14	224	249	54	42	8	56	85	40	140	85	82	3/8	160
Ø63	45	35	M30* P1.5	20	22	102	16	228	253	57	44	8	62	95	32	140	85	87	3/8	160
Ø80	45	40	M30* P1.5	20	27	131	18	294	317	76	63	13	80	120	40	168	107	94	1/2	188
Ø100	55	50	M40* P2.0	25	24	158.5	20	320	344	93	66	15	100	140	45.5	188	123.5	110	1/2	213
Ø125	70	60	M50* P2.0	35	30	195	24	394	434	114	80	15	122	169	66	234	143	121	3/4	269
Ø150	80	80	M70* P2.0	35	30	220	28	390	430	125	80	20	144	200	66	230	135	126	3/4	265
Ø180	100	100	M90* P2.0	35	40	267.5	35	460	510	150	90	20	175	240	75	280	172	149	1	315
Ø200	100	100	M90* P2.0	40	40	301	35	475	520	170	95	25	193	265	78	285	175	176	1	325

TA Type

140 kgf/cm² 方型油壓缸



尺寸规格	A	ØMM	KK	E	TA	TD	TL	TX	TY	FP	LZ	P	PP	PT	Z
Ø40	40	25	M22* P1.5	20	53.5	20	20	69	109	37	150	76	78	1/8	148
Ø50	40	30	M26* P1.5	20	56	25	25	84	134	40	165	85	82	1/8	160
Ø63	45	35	M30* P1.5	20	56	32	30	94	154	32	165	85	87	1/8	160
Ø80	45	40	M30* P1.5	20	59	32	30	114	174	40	191	107	94	1/2	188
Ø100	55	50	M40* P2.0	25	65.5	35	35	135	205	45.5	212	123.5	110	1/2	213
Ø125	70	60	M50* P2.0	35	93.5	45	45	168	258	66	274	143	121	3/4	269
Ø150	100	100	M70* P2.0	35	95	50	50	200	300	66	270	135	126	3/4	265

YM

YH

YKH

YS

YR

YCR

YHS

YHR

YT

YMT

ACC

YM

YH

YKH

YS

YR

YCR

YHS

YHR

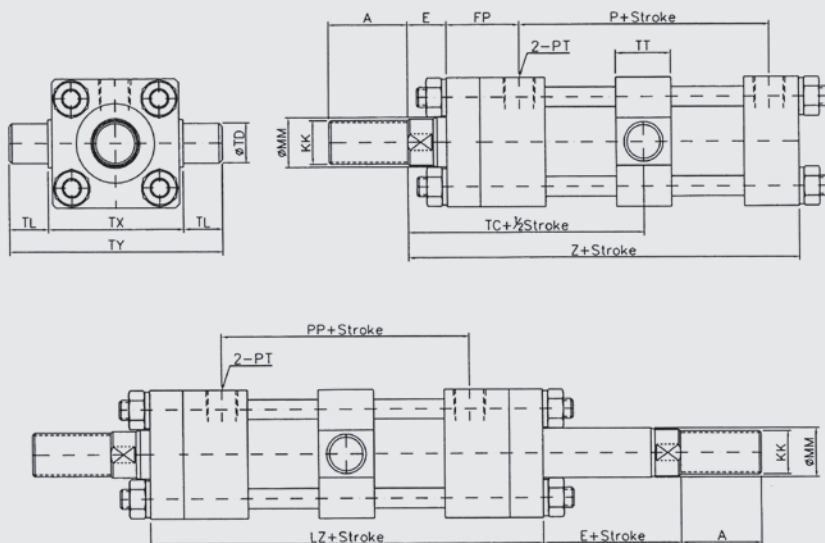
YT

YMT

ACC

140 kg/cm² 方型油壓缸

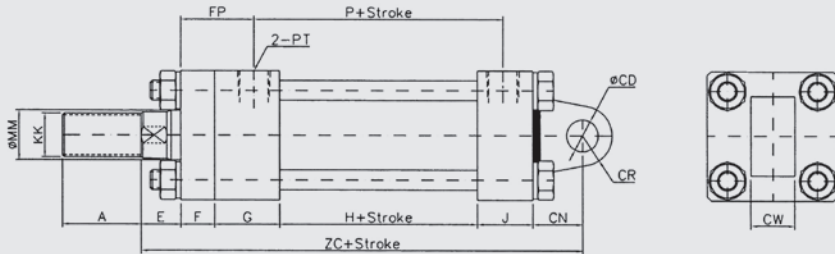
TC Type



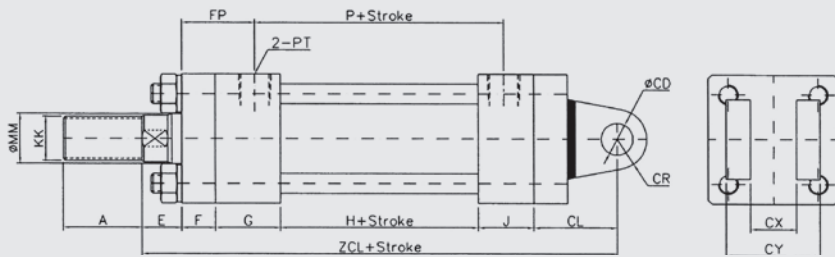
尺寸规格	A	ØMM	KK	E	TC	TD	TL	TT	TX	TY	FP	LZ	P	PP	PT	Z
Ø40	40	25	M22* P1.5	20	95	20	20	28	75	115	37	150	76	78	3/8	148
Ø50	40	30	M26* P1.5	20	102.5	25	25	33	90	140	40	165	85	82	3/8	160
Ø63	45	35	M30* P1.5	20	102.5	32	32	40	102	166	32	165	85	87	3/8	160
Ø80	45	40	M30* P1.5	20	115.5	32	32	43	120	184	40	191	107	94	1/2	188
Ø100	55	50	M40* P2.0	25	131	40	40	53	140	220	45.5	212	123.5	110	1/2	213
Ø125	70	60	M50* P2.0	35	172	50	50	58	175	275	66	274	143	121	3/4	269
Ø150	80	80	M70* P2.0	35	170	60	60	73	206	326	66	270	135	126	3/4	265
Ø180	100	100	M90* P2.0	35	200	80	80	98	243	403	75	330	172	149	1	315
Ø200	100	100	M90* P2.0	40	205	90	90	108	272	452	78	330	175	176	1	325

140 kg/cm² 方型油壓缸

CA Type



CB Type



尺寸规格	A	ØMM	KK	CD	CL	CR	CN	CW	CX	CY	E	F	FP	G	H	J	P	PT	ZC	ZCL
Ø40	40	25	M22* P1.5	16	42	15	25	22	23	47	20	17	37	33	50	28	76	3/8	173	190
Ø50	40	30	M26* P1.5	20	52	20	35	22	23	47	20	17	40	38	55	30	85	3/8	195	212
Ø63	45	35	M30* P1.5	25	62	25	45	30	31	59	20	17	32	38	55	30	85	3/8	205	222
Ø80	45	40	M30* P1.5	30	70	30	50	35	36	76	20	20	40	38	75	35	107	1/2	238	258
Ø100	55	50	M40* P2.0	35	80	35	60	40	41	81	25	20	45.5	41	90	37	123.5	1/2	273	293
Ø125	70	60	M50* P2.0	50	100	50	70	55	56	106	35	30	66	57	100	47	143	3/4	339	369
Ø150	80	80	M70* P2.0	60	110	60	80	60	61	121	35	30	66	60	90	50	135	3/4	345	375
Ø180	100	100	M90* P2.0	80	140	80	100	80	81	161	35	40	75	65	120	55	172	1	415	455
Ø200	100	100	M90* P2.0	90	150	90	110	90	91	171	40	40	78	65	120	60	175	1	435	475

YM

YH

YKH

YS

YR

YCR

YHS

YHR

YT

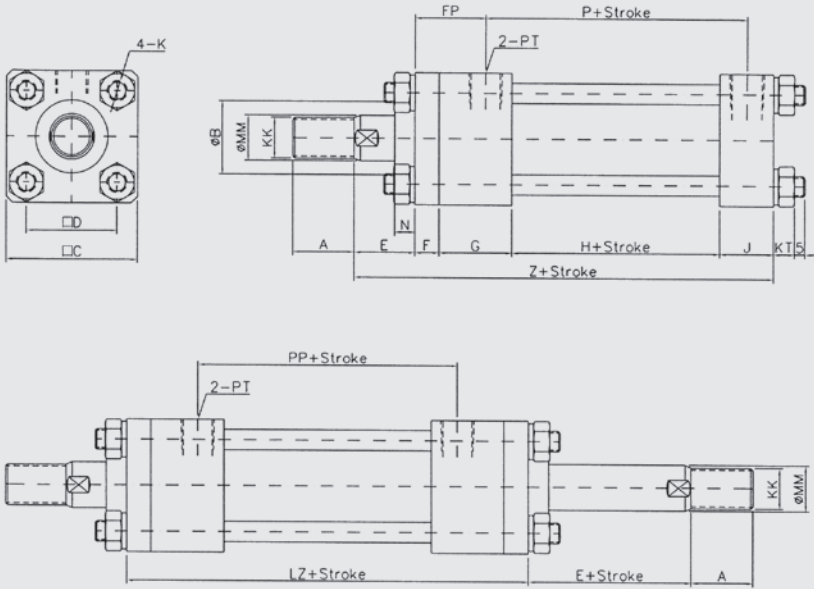
YMT

ACC

YKH
方型油壓缸

SD Type

140 kg/cm² 方型油壓缸



規格	A 型				B 型				C	D	E	F	FP	G	H	J	K	KT	LZ	N	P	PP	PT	Z
	A	ØB	ØMM	KK	A	ØB	ØMM	KK																
Ø40	25	31	18	M16* P1.5	30	36	22.4	M20* P1.5	65	45	30	12	35	36	52	26	M10* P1.5	10.5	148	10	78	78	3/8	156
Ø50	30	36	22.4	M20* P1.5	35	41	28	M24* P1.5	75	52	30	14	41	42	52	32	M10* P1.5	10.5	164	10	83	82	3/8	170
Ø63	35	46	28	M24* P1.5	45	49	35.5	M30* P1.5	90	63	35	16	42	42	55	34	M12* P1.5	13	171	10	88	87	1/2	182
Ø80	45	49	35.5	M30* P1.5	55	59	45	M39* P1.5	110	80	35	18	47	46	60	38	M16* P1.5	17	188	12	97	94	1/2	197
Ø100	55	59	45	M39* P1.5	60	70	56	M48* P1.5	135	102	40	20	50	50	70	40	M18* P1.5	19.5	210	14	110	110	1/2	220
Ø125	60	70	56	M48* P1.5	75	90	70	M64* P2.0	165	122	45	24	59	58	75	48	M22* P1.5	23.5	239	15	123	121	3/4	250
Ø140	65	80	60	M50* P2.0	80	100	80	M72* P2.0	185	138	50	26	61	58	80	48	M24* P2.0	25	248	17	128	126	3/4	262
Ø150	70	85	65	M60* P2.0	85	105	85	M76* P2.0	196	148	50	28	63	58	80	48	M27* P2.0	28	252	17	128	126	3/4	264
Ø160	75	90	70	M64* P2.0	90	110	90	M80* P2.0	210	160	55	31	71	68	86	58	M27* P2.0	28	284	16	144	142	1	298
Ø180	80	100	80	M72* P2.0	100	120	100	M95* P2.0	235	182	55	33	73	68	93	58	M30* P2.0	31.5	295	21	151	149	1	307
Ø200	90	110	90	M80* P2.0	115	135	112	M100* P2.0	262	200	60	37	77	78	100	68	M33* P2.0	34	330	22	172	176	1-1/4	343
Ø225	100	120	100	M95* P2.0	125	145	125	M120* P2.0	292	225	60	41	81	78	110	68	M39* P3.0	40.5	348	25	182	186	1-1/4	357
Ø250	115	135	112	M100* P2.0	140	165	140	M130* P2.0	325	250	65	46	87	80	116	70	M42* P3.0	41	368	27	190	194	1-1/4	377

YM

YH

YKH

YS

YR

YCR

YHS

YHR

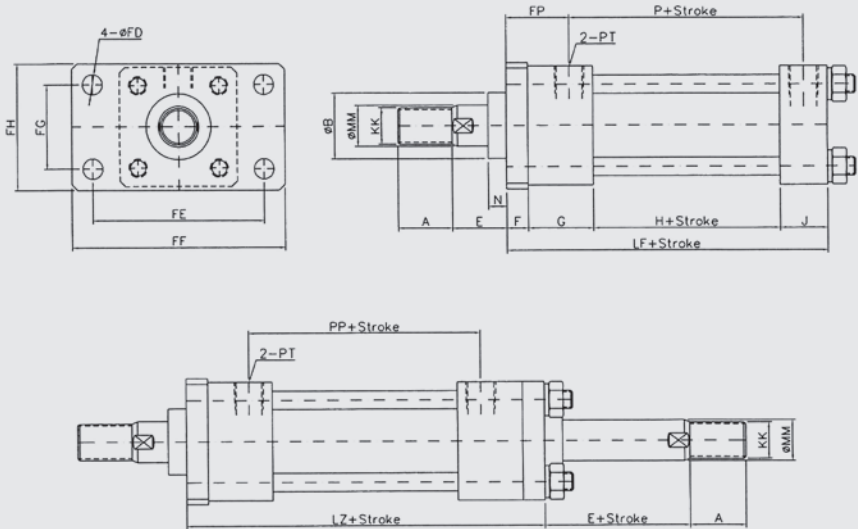
YT

YMT

ACC

FA Type

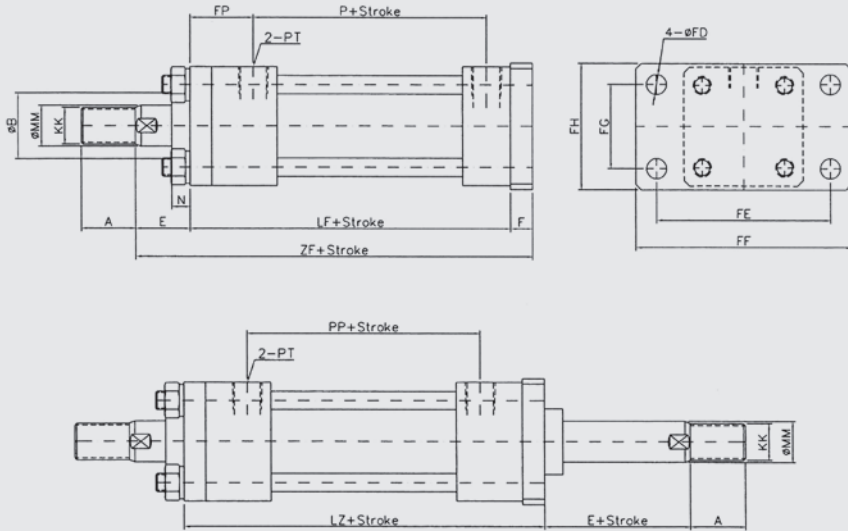
140 kg/cm² 方型油壓缸



規格	A 型				B 型				E	F	FD	FE	FF	FG	FH	FP	G	H	J	LF	LZ	N	P	PP	PT
	A	ØB	ØMM	KK	A	ØB	ØMM	KK																	
Ø40	25	31	18	M16* P1.5	30	36	22.4	M20* P1.5	30	12	11	95	118	46	69	35	36	52	26	126	148	10	78	78	3/8
Ø50	30	36	22.4	M20* P1.5	35	41	28	M24* P1.5	30	14	14	115	145	58	85	41	42	52	32	140	164	10	83	82	3/8
Ø63	35	46	28	M24* P1.5	45	49	35.5	M30* P1.5	35	16	18	132	165	65	98	42	42	55	34	147	171	10	88	87	1/2
Ø80	45	49	35.5	M30* P1.5	55	59	45	M39* P1.5	35	18	18	155	190	87	118	47	46	60	38	162	188	12	97	94	1/2
Ø100	55	59	45	M39* P1.5	60	70	56	M48* P1.5	40	20	22	190	230	109	150	50	50	70	40	180	210	14	110	110	1/2
Ø125	60	70	56	M48* P1.5	75	90	70	M64* P2.0	45	24	26	224	272	130	175	59	58	75	48	205	239	15	123	121	3/4
Ø140	65	80	60	M50* P2.0	80	100	80	M72* P2.0	50	26	26	250	300	145	195	61	58	80	48	212	248	17	128	126	3/4
Ø150	70	85	65	M60* P2.0	85	105	85	M76* P2.0	50	28	30	270	320	155	210	63	58	80	48	214	252	17	128	126	3/4
Ø160	75	90	70	M64* P2.0	90	110	90	M80* P2.0	55	31	33	285	345	170	225	71	68	86	58	243	284	16	144	142	1
Ø180	80	100	80	M72* P2.0	100	120	100	M95* P2.0	55	33	33	315	375	185	243	73	68	93	58	252	295	21	151	149	1
Ø200	90	110	90	M80* P2.0	115	135	112	M100* P2.0	60	37	36	355	425	206	272	77	78	100	68	283	330	22	172	176	1-1/4
Ø225	100	120	100	M95* P2.0	125	145	125	M120* P2.0	60	41	42	395	475	230	310	81	78	110	68	297	348	25	182	186	1-1/4
Ø250	115	135	112	M100* P2.0	140	165	140	M130* P2.0	65	46	45	425	515	250	335	87	80	116	70	312	368	27	190	194	1-1/4

FB Type

140 kg/cm² 方型油壓缸



規格	A 型				B 型				E	F	FD	FE	FF	FG	FH	FP	LF	LZ	N	P	PP	PT	ZF
	A	ØB	ØMM	KK	A	ØB	ØMM	KK															
Ø40	25	31	18	M16* P1.5	30	36	22.4	M20* P1.5	30	12	11	95	118	46	69	35	126	148	10	78	78	3/8	168
Ø50	30	36	22.4	M20* P1.5	35	41	28	M24* P1.5	30	14	14	115	145	58	85	41	140	164	10	83	82	3/8	184
Ø63	35	46	28	M24* P1.5	45	49	35.5	M30* P1.5	35	16	18	132	165	65	98	42	147	171	10	88	87	1/2	198
Ø80	45	49	35.5	M30* P1.5	55	59	45	M39* P1.5	35	18	18	155	190	87	118	47	162	188	12	97	94	1/2	215
Ø100	55	59	45	M39* P1.5	60	70	56	M48* P1.5	40	20	22	190	230	109	150	50	180	210	14	110	110	1/2	240
Ø125	60	70	56	M48* P1.5	75	90	70	M64* P2.0	45	24	26	224	272	130	175	59	205	239	15	123	121	3/4	274
Ø140	65	80	60	M50* P2.0	80	100	80	M72* P2.0	50	26	26	250	300	145	195	61	212	248	17	128	126	3/4	288
Ø150	70	85	65	M60* P2.0	85	105	85	M76* P2.0	50	28	30	270	320	155	210	63	214	252	17	128	126	3/4	292
Ø160	75	90	70	M64* P2.0	90	110	90	M80* P2.0	55	31	33	285	345	170	225	71	243	284	16	144	142	1	329
Ø180	80	100	80	M72* P2.0	100	120	100	M95* P2.0	55	33	33	315	375	185	243	73	252	295	21	151	149	1	340
Ø200	90	110	90	M80* P2.0	115	135	112	M100* P2.0	60	37	36	355	425	206	272	77	283	330	22	172	176	1-1/4	380
Ø225	100	120	100	M95* P2.0	125	145	125	M120* P2.0	60	41	42	395	475	230	310	81	297	348	25	182	186	1-1/4	398
Ø250	115	135	112	M100* P2.0	140	165	140	M130* P2.0	65	46	45	425	515	250	335	87	312	368	27	190	194	1-1/4	423

YM

YH

YKH

YS

YR

YCR

YHS

YHR

YT

YMT

ACC

YM

YH

YKH

YS

YR

YCR

YHS

YHR

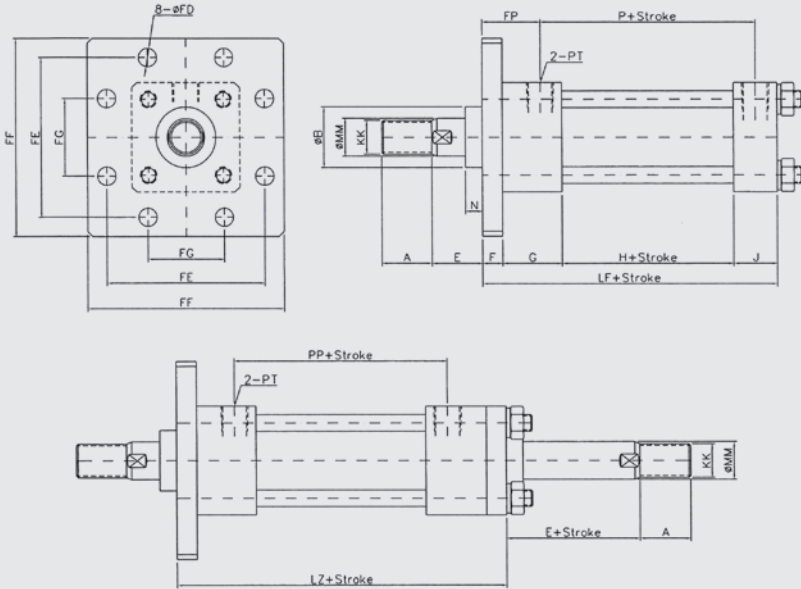
YT

YMT

ACC

140 kg/cm² 方型油壓缸

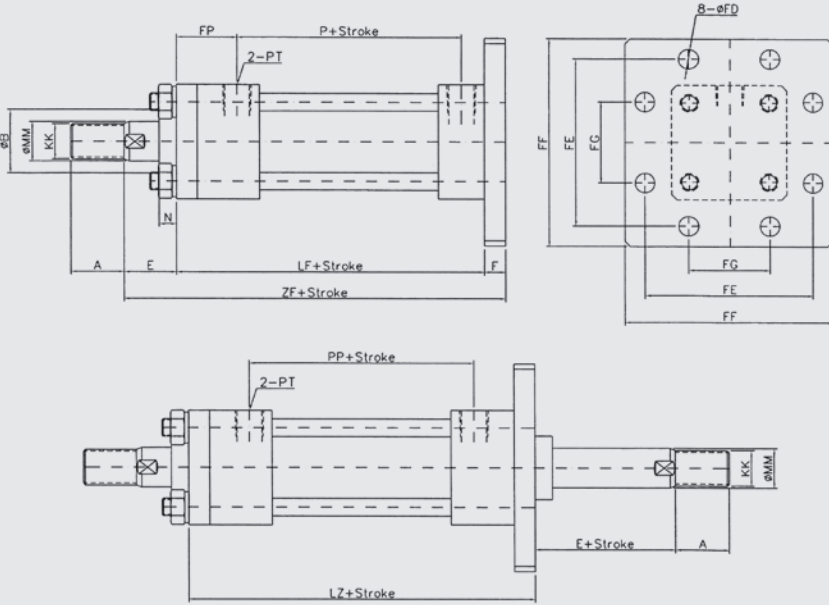
FC Type



規格	A 型				B 型				E	F	FD	FE	FF	FG	FP	G	H	J	LF	LZ	N	P	PP	PT
	A	ØB	ØMM	KK	A	ØB	ØMM	KK																
Ø40	25	31	18	M16* P1.5	30	36	22.4	M20* P1.5	30	12	11	95	118	46	35	36	52	26	126	148	10	78	78	3/8
Ø50	30	36	22.4	M20* P1.5	35	41	28	M24* P1.5	30	14	14	115	145	58	41	42	52	32	140	164	10	83	82	3/8
Ø63	35	46	28	M24* P1.5	45	49	35.5	M30* P1.5	35	16	18	132	165	65	42	42	55	34	147	171	10	88	87	1/2
Ø80	45	49	35.5	M30* P1.5	55	59	45	M39* P1.5	35	18	18	155	190	87	47	46	60	38	162	188	12	97	94	1/2
Ø100	55	59	45	M39* P1.5	60	70	56	M48* P1.5	40	20	22	190	230	109	50	50	70	40	180	210	14	110	110	1/2
Ø125	60	70	56	M48* P1.5	75	90	70	M64* P2.0	45	24	26	224	272	130	59	58	75	48	205	239	15	123	121	3/4
Ø140	65	80	60	M50* P2.0	80	100	80	M72* P2.0	50	26	26	250	300	145	61	58	80	48	212	248	17	128	126	3/4
Ø150	70	85	65	M60* P2.0	85	105	85	M76* P2.0	50	28	30	270	320	155	63	58	80	48	214	252	17	128	126	3/4
Ø160	75	90	70	M64* P2.0	90	110	90	M80* P2.0	55	31	33	285	345	170	71	68	86	58	243	284	16	144	142	1
Ø180	80	100	80	M72* P2.0	100	120	100	M95* P2.0	55	33	33	315	375	185	73	68	93	58	252	295	21	151	149	1
Ø200	90	110	90	M80* P2.0	115	135	112	M100* P2.0	60	37	36	355	425	206	77	78	100	68	283	330	22	172	176	1-1/4
Ø225	100	120	100	M95* P2.0	125	145	125	M120* P2.0	60	41	42	395	475	230	81	78	110	68	297	348	25	182	186	1-1/4
Ø250	115	135	112	M100* P2.0	140	165	140	M130* P2.0	65	46	45	425	515	250	87	80	116	70	312	368	27	190	194	1-1/4

FD Type

140 kg/cm² 方型油壓缸



規格	A 型				B 型				E	F	FD	FE	FF	FG	FP	LF	LZ	N	P	PP	PT	ZF
	A	ØB	ØMM	KK	A	ØB	ØMM	KK														
Ø40	25	31	18	M16* P1.5	30	36	22.4	M20* P1.5	30	12	11	95	118	46	35	126	148	10	78	78	3/8	168
Ø50	30	36	22.4	M20* P1.5	35	41	28	M24* P1.5	30	14	14	115	145	58	41	140	164	10	83	82	3/8	184
Ø63	35	46	28	M24* P1.5	45	49	35.5	M30* P1.5	35	16	18	132	165	65	42	147	171	10	88	87	1/2	198
Ø80	45	49	35.5	M30* P1.5	55	59	45	M39* P1.5	35	18	18	155	190	87	47	162	188	12	97	94	1/2	215
Ø100	55	59	45	M39* P1.5	60	70	56	M48* P1.5	40	20	22	190	230	109	50	180	210	14	110	110	1/2	240
Ø125	60	70	56	M48* P1.5	75	90	70	M64* P2.0	45	24	26	224	272	130	59	205	239	15	123	121	3/4	274
Ø140	65	80	60	M50* P2.0	80	100	80	M72* P2.0	50	26	26	250	300	145	61	212	248	17	128	126	3/4	288
Ø150	70	85	65	M60* P2.0	85	105	85	M76* P2.0	50	28	30	270	320	155	63	214	252	17	128	126	3/4	292
Ø160	75	90	70	M64* P2.0	90	110	90	M80* P2.0	55	31	33	285	345	170	71	243	284	16	144	142	1	329
Ø180	80	100	80	M72* P2.0	100	120	100	M95* P2.0	55	33	33	315	375	185	73	252	295	21	151	149	1	340
Ø200	90	110	90	M80* P2.0	115	135	112	M100* P2.0	60	37	36	355	425	206	77	283	330	22	172	176	1-1/4	380
Ø225	100	120	100	M95* P2.0	125	145	125	M120* P2.0	60	41	42	395	475	230	81	297	348	25	182	186	1-1/4	398
Ø250	115	135	112	M100* P2.0	140	165	140	M130* P2.0	65	46	45	425	515	250	87	312	368	27	190	194	1-1/4	423

YM

YH

YKH

YS

YR

YCR

YHS

YHR

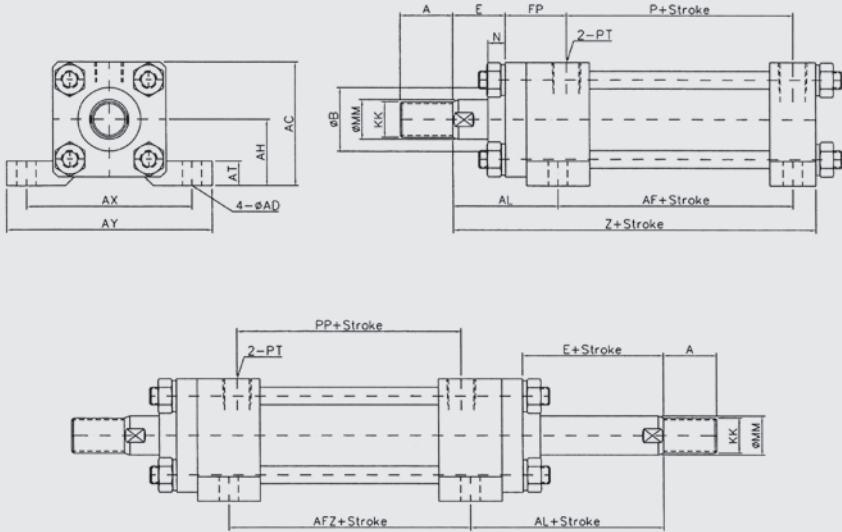
YT

YMT

ACC

LA Type

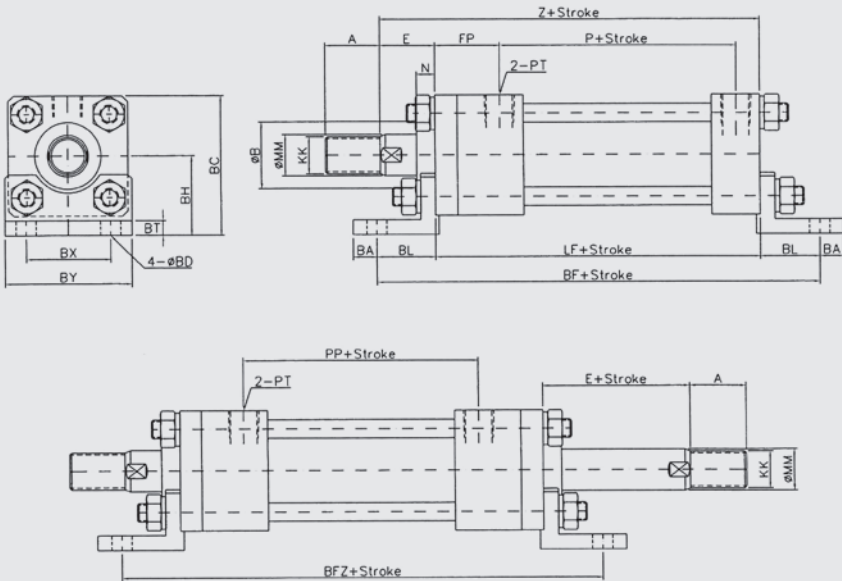
140 kgf/cm² 方型油壓缸



規格	A 型				B 型				AC	AD	AF	AH	AL	AT	AX	AY	AFZ	E	FP	N	P	PP	PT	Z
	A	ØB	ØMM	KK	A	ØB	ØMM	KK																
Ø40	25	31	18	M16* P1.5	30	36	22.4	M20* P1.5	70	11	83	37.5	60	14	95	118	88	30	35	10	78	78	3/8	156
Ø50	30	36	22.4	M20* P1.5	35	41	28	M24* P1.5	82.5	14	89	45	65	17	115	145	94	30	41	10	83	82	3/8	170
Ø63	35	46	28	M24* P1.5	45	49	35.5	M30* P1.5	95	18	93	50	72	19	132	165	97	35	42	10	88	87	1/2	182
Ø80	45	49	35.5	M30* P1.5	55	59	45	M39* P1.5	115	18	102	60	76	25	155	190	106	35	47	12	97	94	1/2	197
Ø100	55	59	45	M39* P1.5	60	70	56	M48* P1.5	138.5	22	115	71	85	27	190	230	120	40	50	14	110	110	1/2	220
Ø125	60	70	56	M48* P1.5	75	90	70	M64* P2.0	167.5	26	128	85	98	32	224	272	133	45	59	15	123	121	3/4	250
Ø140	65	80	60	M50* P2.0	80	100	80	M72* P2.0	187.5	26	133	95	105	35	250	300	138	50	61	17	128	126	3/4	262
Ø150	70	85	65	M60* P2.0	85	105	85	M76* P2.0	204	30	133	106	107	37	270	320	138	50	63	17	128	126	3/4	264
Ø160	75	90	70	M64* P2.0	90	110	90	M80* P2.0	217	33	149	112	120	42	285	345	154	55	71	16	144	142	1	298
Ø180	80	100	80	M72* P2.0	100	120	100	M95* P2.0	242.5	33	156	125	122	47	315	375	161	55	73	21	151	149	1	307
Ø200	90	110	90	M80* P2.0	115	135	112	M100* P2.0	271	36	173	140	136	52	355	425	178	60	77	22	172	176	1-1/4	343
Ø225	100	120	100	M95* P2.0	125	145	125	M120* P2.0	296	42	183	150	140	52	395	475	188	60	81	25	182	186	1-1/4	357
Ø250	115	135	112	M100* P2.0	140	165	140	M130* P2.0	332.5	45	191	170	151	57	425	515	196	65	87	27	190	194	1-1/4	377

LB Type

140 kg/cm² 方型油壓缸



規格	A 型				B 型																					
	A	ØB	ØMM	KK	A	ØB	ØMM	KK	BA	BC	BD	BF	BH	BL	BT	BX	BY	BFZ	E	FP	LF	N	P	PP	PT	Z
Ø40	25	31	18	M16* P1.5	30	36	22.4	M20* P1.5	13	75.5	11	190	43	32	8	46	69	212	30	35	126	10	78	78	3/8	156
Ø50	30	36	22.4	M20* P1.5	35	41	28	M24* P1.5	15	87.5	14	210	50	35	8	58	85	234	30	41	140	10	83	82	3/8	170
Ø63	35	46	28	M24* P1.5	45	49	35.5	M30* P1.5	18	105	18	231	60	42	10	65	98	255	35	42	147	10	88	87	1/2	182
Ø80	45	49	35.5	M30* P1.5	55	59	45	M39* P1.5	20	127	18	262	72	50	12	87	118	288	35	47	162	12	97	94	1/2	197
Ø100	55	59	45	M39* P1.5	60	70	56	M48* P1.5	23	152.5	22	290	85	55	12	109	150	320	40	50	180	14	110	110	1/2	220
Ø125	60	70	56	M48* P1.5	75	90	70	M64* P2.0	29	187.5	26	337	105	66	15	130	175	371	45	59	205	15	123	121	3/4	250
Ø140	65	80	60	M50* P2.0	80	100	80	M72* P2.0	30	207.5	26	352	115	70	18	145	195	388	50	61	212	17	128	126	3/4	262
Ø150	70	85	65	M60* P2.0	85	105	85	M76* P2.0	30	221	30	364	123	75	18	155	210	402	50	63	214	17	128	126	3/4	264
Ø160	75	90	70	M64* P2.0	90	110	90	M80* P2.0	35	237	33	393	132	75	18	170	225	434	55	71	243	16	144	142	1	298
Ø180	80	100	80	M72* P2.0	100	120	100	M95* P2.0	40	265.5	33	422	148	85	20	185	243	465	55	73	252	21	151	149	1	307
Ø200	90	110	90	M80* P2.0	115	135	112	M100* P2.0	40	296	36	479	165	98	25	206	272	526	60	77	283	22	172	176	1-1/4	343
Ø225	100	120	100	M95* P2.0	125	145	125	M120* P2.0	45	331	42	527	185	115	30	230	310	578	60	81	297	25	182	186	1-1/4	357
Ø250	115	135	112	M100* P2.0	140	165	140	M130* P2.0	50	370.5	45	572	208	130	35	250	335	628	65	87	312	27	190	194	1-1/4	377

YM

YH

YKH

YS

YR

YCR

YHS

YHR

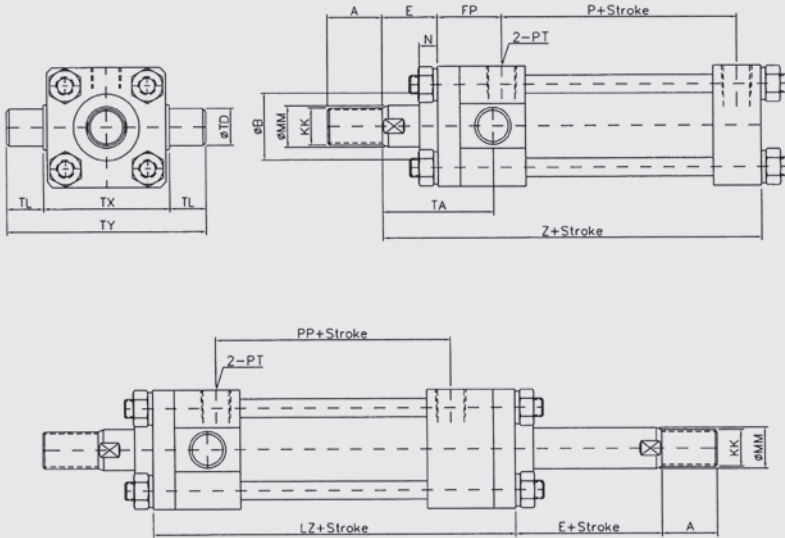
YT

YMT

ACC

TA Type

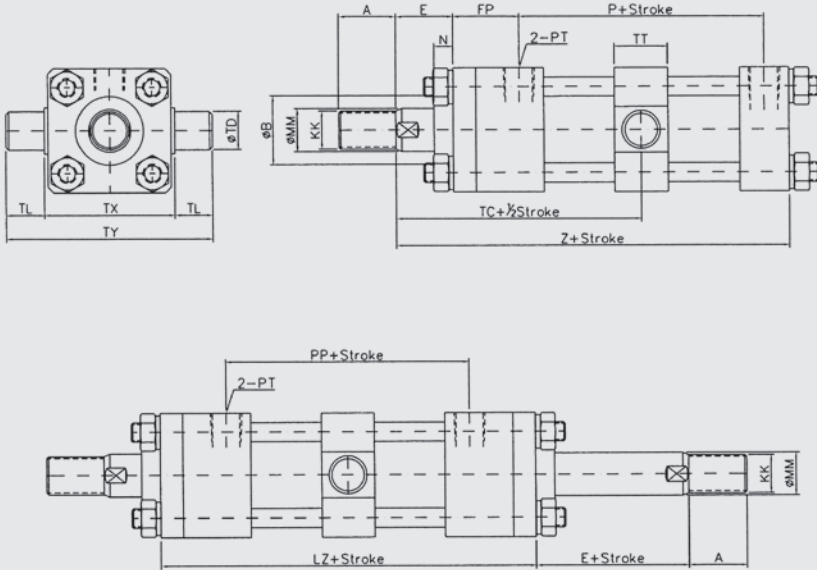
140 kg/cm² 方型油壓缸



規格	A 型				B 型				E	FP	LZ	N	P	PP	PT	TA	TD	TL	TX	TY	Z
	A	ØB	ØMM	KK	A	ØB	ØMM	KK													
Ø40	25	31	18	M16* P1.5	30	36	22.4	M20* P1.5	30	35	148	10	78	78	3/8	60	20	20	69	109	156
Ø50	30	36	22.4	M20* P1.5	35	41	28	M24* P1.5	30	41	164	10	83	82	3/8	65	25	25	85	135	170
Ø63	35	46	28	M24* P1.5	45	49	35.5	M30* P1.5	35	42	171	10	88	87	1/2	72	31.5	31.5	98	161	182
Ø80	45	49	35.5	M30* P1.5	55	59	45	M39* P1.5	35	47	188	12	97	94	1/2	76	31.5	31.5	118	181	197
Ø100	55	59	45	M39* P1.5	60	70	56	M48* P1.5	40	50	210	14	110	110	1/2	85	40	40	145	225	220
Ø125	60	70	56	M48* P1.5	75	90	70	M64* P2.0	45	59	239	15	123	121	3/4	98	50	50	175	275	250
Ø140	65	80	60	M50* P2.0	80	100	80	M72* P2.0	50	61	248	17	128	126	3/4	105	55	55	195	305	262
Ø150	70	85	65	M60* P2.0	85	105	85	M76* P2.0	50	63	252	17	128	126	3/4	107	63	63	206	332	264
Ø160	75	90	70	M64* P2.0	90	110	90	M80* P2.0	55	71	284	16	144	142	1	120	71	71	218	360	298

TC Type

140 kg/cm² 方型油壓缸



規格	A 型				B 型				E	FP	LZ	N	P	PP	PT	TC	TD	TL	TT	TX	TY	Z
	A	ØB	ØMM	KK	A	ØB	ØMM	KK														
Ø40	25	31	18	M16* P1.5	30	36	22.4	M20* P1.5	30	35	148	10	78	78	3/8	104	20	20	28	69	109	156
Ø50	30	36	22.4	M20* P1.5	35	41	28	M24* P1.5	30	41	164	10	83	82	3/8	112	25	25	33	85	135	170
Ø63	35	46	28	M24* P1.5	45	49	35.5	M30* P1.5	35	42	171	10	88	87	1/2	120.5	31.5	31.5	43	98	161	182
Ø80	45	49	35.5	M30* P1.5	55	59	45	M39* P1.5	35	47	188	12	97	94	1/2	129	31.5	31.5	43	118	181	197
Ø100	55	59	45	M39* P1.5	60	70	56	M48* P1.5	40	50	210	14	110	110	1/2	145	40	40	53	145	225	220
Ø125	60	70	56	M48* P1.5	75	90	70	M64* P2.0	45	59	239	15	123	121	3/4	164.5	50	50	58	175	275	250
Ø140	65	80	60	M50* P2.0	80	100	80	M72* P2.0	50	61	248	17	128	126	3/4	174	55	55	78	195	305	262
Ø150	70	85	65	M60* P2.0	85	105	85	M76* P2.0	50	63	252	17	128	126	3/4	176	63	63	78	206	332	264
Ø160	75	90	70	M64* P2.0	90	110	90	M80* P2.0	55	71	284	16	144	142	1	197	71	71	88	218	360	298
Ø180	80	100	80	M72* P2.0	100	120	100	M95* P2.0	55	73	295	21	151	149	1	202.5	80	80	98	243	403	307
Ø200	90	110	90	M80* P2.0	115	135	112	M100* P2.0	60	77	330	22	172	176	1-1/4	225	90	90	108	272	452	343
Ø225	100	120	100	M95* P2.0	125	145	125	M120* P2.0	60	81	348	25	182	186	1-1/4	234	100	100	117	300	500	357
Ø250	115	135	112	M100* P2.0	140	165	140	M130* P2.0	65	87	368	27	190	194	1-1/4	249	100	100	117	335	535	377

YM

YH

YKH

YS

YR

YCR

YHS

YHR

YT

YMT

ACC

YM

YH

YKH

YS

YR

YCR

YHS

YHR

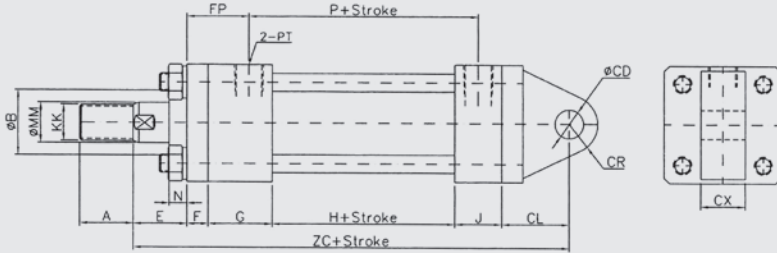
YT

YMT

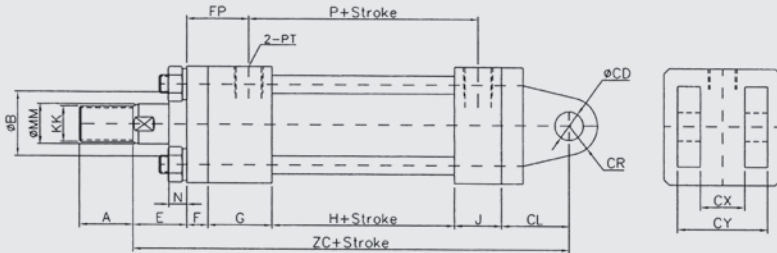
ACC

140 kg/cm² 方型油壓缸

CA Type



CB Type



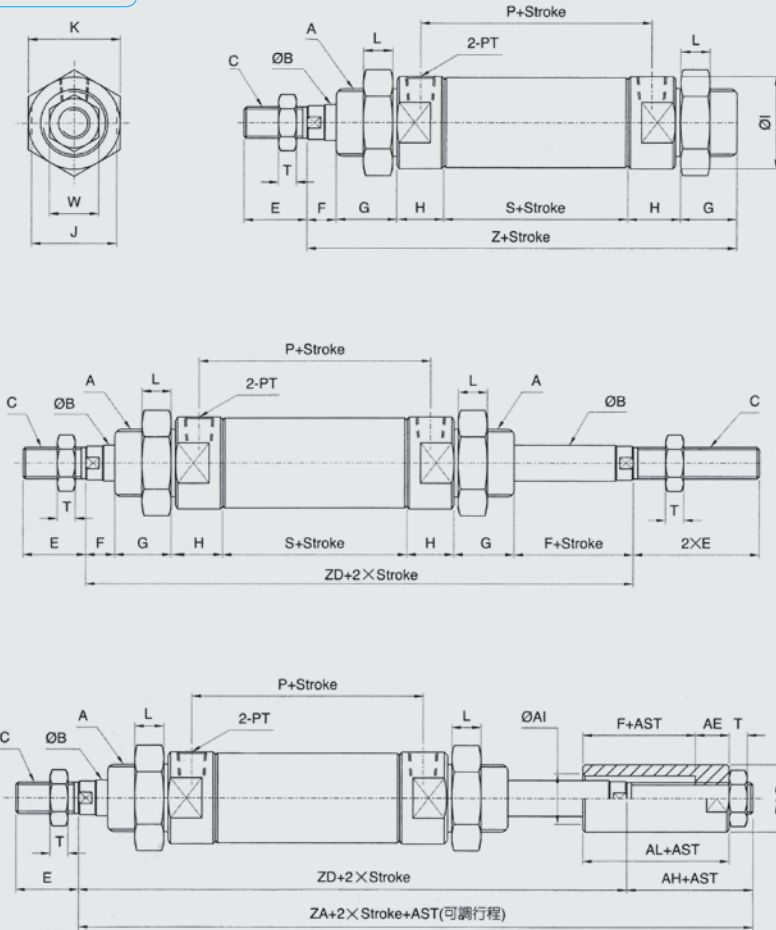
規格	A 型				B 型				CD	CL	CR	CX	CY	E	F	FP	G	H	J	N	P	PT	ZC
	A	ØB	ØMM	KK	A	ØB	ØMM	KK															
Ø40	25	31	18	M16* P1.5	30	36	22.4	M20* P1.5	16	38	16	25	50	30	12	35	36	52	26	10	78	3/8	194
Ø50	30	36	22.4	M20* P1.5	35	41	28	M24* P1.5	20	45	20	31.5	63.5	30	14	41	42	52	32	10	83	3/8	215
Ø63	35	46	28	M24* P1.5	45	49	35.5	M30* P1.5	31.5	63	31.5	40	80	35	16	42	42	55	34	10	88	1/2	245
Ø80	45	49	35.5	M30* P1.5	55	59	45	M39* P1.5	31.5	72	31.5	40	80	35	18	47	46	60	38	12	97	1/2	269
Ø100	55	59	45	M39* P1.5	60	70	56	M48* P1.5	40	84	40	50	100	40	20	50	50	70	40	14	110	1/2	304
Ø125	60	70	56	M48* P1.5	75	90	70	M64* P2.0	50	100	50	63	126	45	24	59	58	75	48	15	123	3/4	350
Ø140	65	80	60	M50* P2.0	80	100	80	M72* P2.0	63	120	63	80	160	50	26	61	58	80	48	17	128	3/4	382
Ø150	70	85	65	M60* P2.0	85	105	85	M76* P2.0	63	122	63	80	160	50	28	63	58	80	48	17	128	3/4	386
Ø160	75	90	70	M64* P2.0	90	110	90	M80* P2.0	71	137	71	80	160	55	31	71	68	86	58	16	144	1	435
Ø180	80	100	80	M72* P2.0	100	120	100	M95* P2.0	80	150	80	100	200	55	33	73	68	93	58	21	151	1	457
Ø200	90	110	90	M80* P2.0	115	135	112	M100* P2.0	90	170	90	125	251	60	37	77	78	100	68	22	172	1-1/4	513
Ø225	100	120	100	M95* P2.0	125	145	125	M120* P2.0	100	185	100	125	251	60	41	81	78	110	68	25	182	1-1/4	542
Ø250	115	135	112	M100* P2.0	140	165	140	M130* P2.0	100	185	100	125	251	65	46	87	80	116	70	27	190	1-1/4	562

YS

小型圓型油壓缸

70 kg/cm² 小型圓型油壓缸

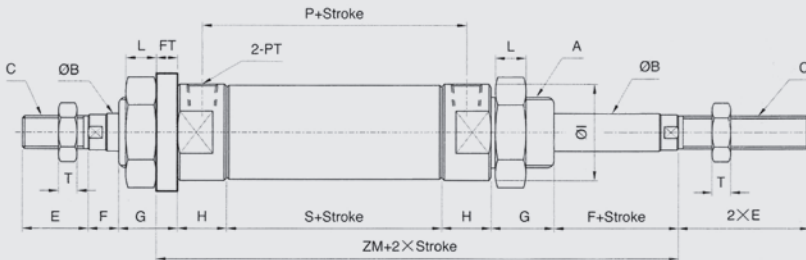
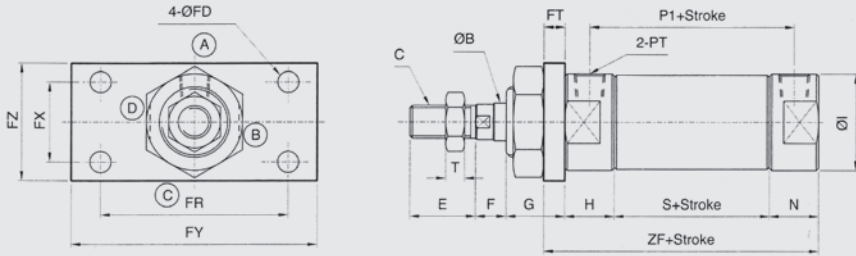
SD Type



規格	尺寸	A	ØB	C	E	F	G	H	ØI	J	K	L	P	PM	PT	S	W	T	Z	ZA	ZD	AH	AE	ØAI	ØAO	AL
Ø20	M26 *P1.5	12	M10 *P1.25	25	12	25	15	32	27	36	12	69	24	1/8	54	17	8	146	183	158	25	15	16	25	27	
Ø30	M30 *P1.5	16	M14 *P1.5	28	13	25	21	41	37	41	13	83	30	1/4	62	22	8	167	205	180	25	15	20	30	28	
Ø40	M40 *P2.0	20	M16 *P1.5	28	17	25	25	50	47	55	15	87	30	3/8	62	24	8	179	226	196	30	20	25	40	37	

70 kgf/cm² 小型圓型油壓缸

FA Type



規格	尺寸	A	ØB	C	E	F	G	H	ØI	L	N	P	PI	PM	PT	S	T	ZF	ZM	ØFD	FT	FR	FX	FY	FZ
Ø20	M26 *P1.5	12	M10 *P1.25	25	12	25	15	32	12	18	70.5	69	24	1/8	54	8	96	130	9	9	56	30	80	45	
Ø30	M30 *P1.5	16	M14 *P1.5	28	13	25	21	41	13	24	84.5	83	30	1/4	62	8	116	151	9	9	80	34	105	50	
Ø40	M40 *P2.0	20	M16 *P1.5	28	17	25	25	50	15	25	89.5	87	30	3/8	62	8	123	165	12	11	93	50	115	72	

YM

YH

YKH

YS

YR

YCR

YHS

YHR

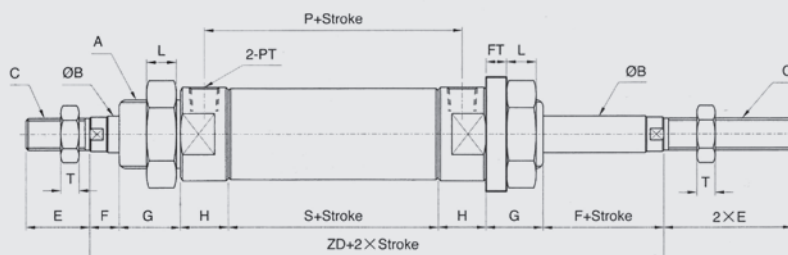
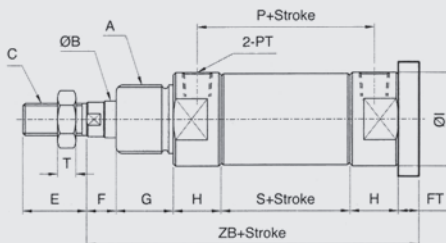
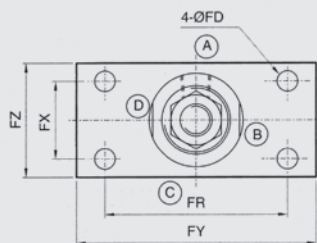
YT

YMT

ACC

70 kg/cm² 小型圓型油壓缸

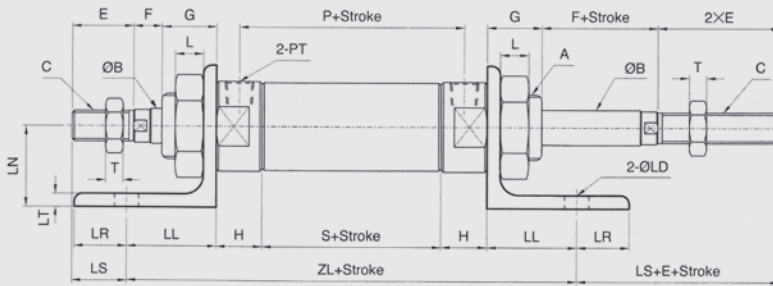
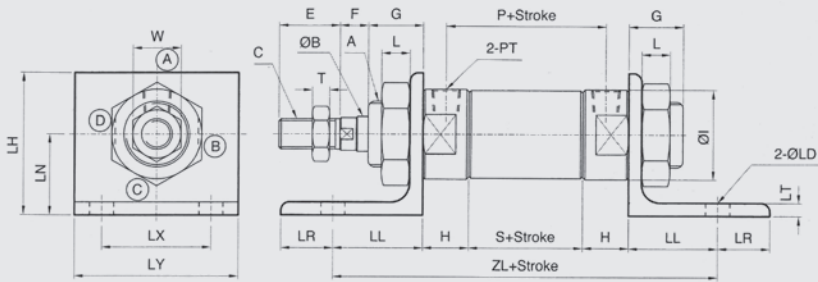
FB Type



規格	尺寸	A	ØB	C	E	F	G	H	ØI	L	P	PM	PT	S	T	ZB	ZD	ØFD	FT	FR	FX	FY	FZ
Ø20	M26 *P1.5	12	M10 *P1.25	25	12	25	15	32	12	69	24	1/8	54	8	130	158	9	9	56	30	80	45	
Ø30	M30 *P1.5	16	M14 *P1.5	28	13	25	21	41	13	83	30	1/4	62	8	151	180	9	9	80	34	105	50	
Ø40	M40 *P2.0	20	M16 *P1.5	28	17	25	25	50	15	87	30	3/8	62	8	165	196	12	11	93	50	115	72	

LB Type

70 kgf/cm² 小型圓型油壓缸



內徑	尺寸		尺寸																						
	A	ØB	C	E	F	G	H	ØI	L	LS	P	PM	PT	S	W	T	ZL	ØLD	LH	LN	LL	LR	LT	LX	LY
Ø20	M26 *P1.5	12	M10 *P1.25	25	12	25	15	32	12	42.5	69	24	1/8	54	16	8	123	7	55	35	19.5	10.5	4.5	40	55
Ø30	M30 *P1.5	16	M14 *P1.5	28	13	25	21	41	13	25	83	30	1/4	62	22	8	186	10	65	37	41	24	6	50	75
Ø40	M40 *P2.0	20	M16 *P1.5	28	17	25	25	50	15	25	87	30	3/8	62	23.5	8	202	12	75	47	45	30	9	60	88

YM

YH

YKH

YS

YR

YCR

YHS

YHR

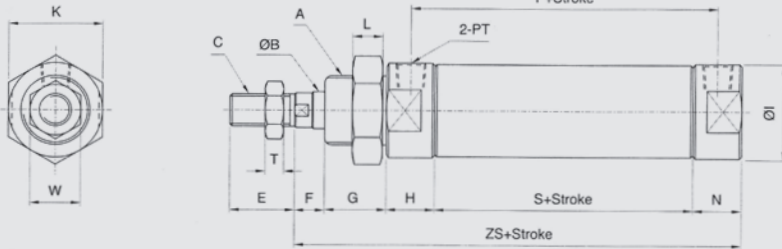
YT

YMT

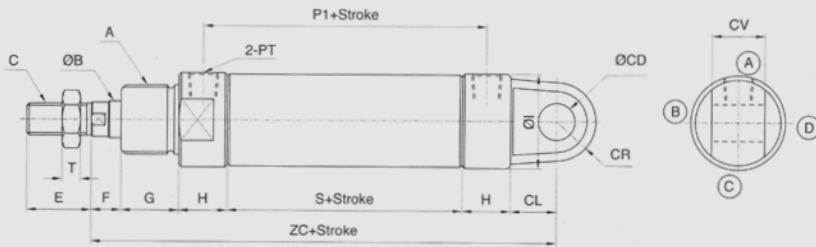
ACC

70 kgf/cm² 小型圓型油壓缸

SD (無尾型) Type



CA Type



規格	尺寸	A	ØB	C	E	F	G	H	ØI	K	L	N	P	P1	PM	PT	S	W	T	ZS	ZC	ØCD	CL	CR	CV
Ø20	M26 *P1.5	12	M10 *P1.25	25	12	25	15	32	36	12	18	70.5	69	24	1/8	54	17	8	124	136	10	15	10	15	
Ø30	M30 *P1.5	16	M14 *P1.5	28	13	25	21	41	41	13	24	84.5	83	30	1/4	62	22	8	145	162	16	20	17	23	
Ø40	M40 *P2.0	20	M16 *P1.5	28	17	25	25	50	55	15	25	89.5	87	30	3/8	62	24	8	154	179	16	25	18	25	

YR

圓型油壓缸

YM

YH

YKH

YS

YR

YCR

YHS

YHR

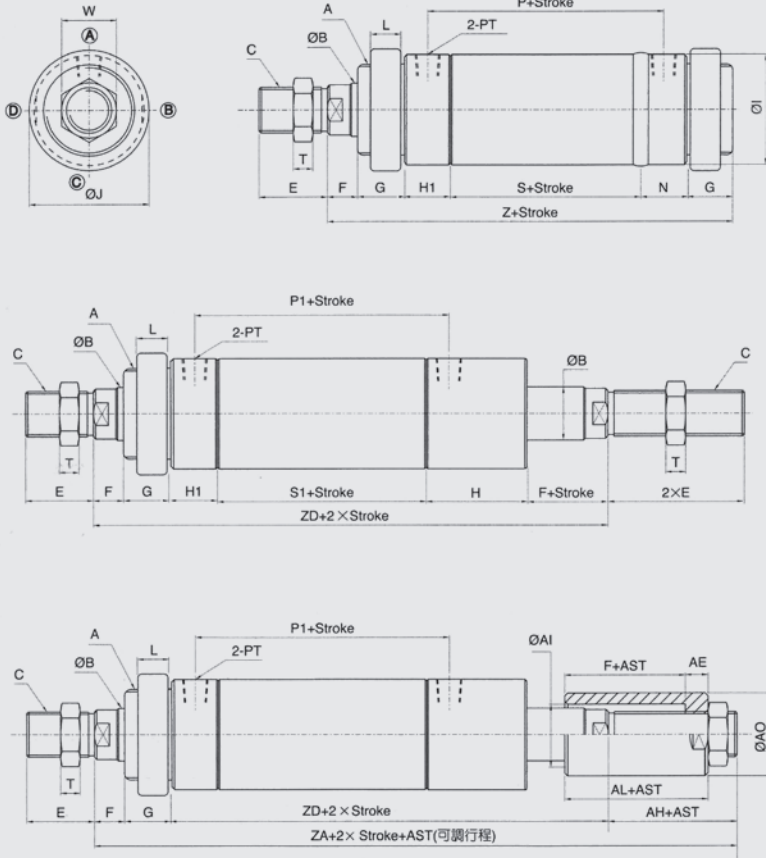
YT

YMT

ACC

140 kgf/cm² 圓型油壓缸

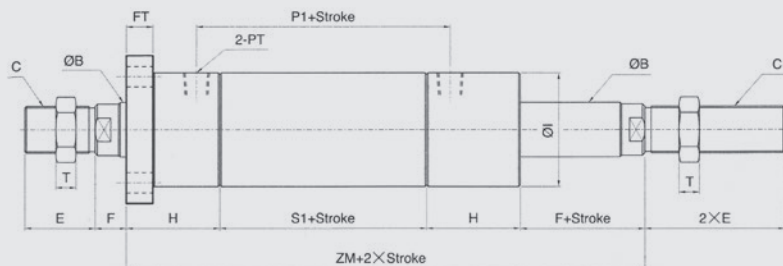
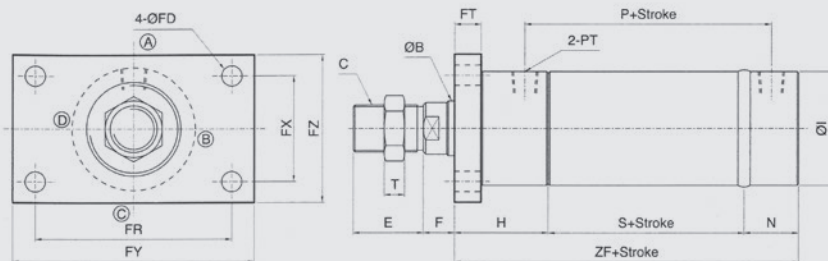
SD Type



規格	尺寸	A	ØB	C	E	F	G	H	H1	ØI	J	L	N	P	P1	PM	PT	S	S1	T	W	Z	ZA	ZD	AH	AE	ØAI	ØAO	AL
Ø40	M40 *P2.0	20	M16 *P1.5	28	17	25	50	25	50	55	15	25	86	107	30	3/8	61	82	8	24	178	246	216	30	20	25	40	37	
Ø50	M50 *P2.0	25	M22 *P1.5	40	20	25	50	25	60	65	15	30	96	112	35	3/8	66	87	10	32	191	267	227	40	25	35	50	45	
Ø63	M60 *P2.0	35	M30 *P1.5	45	20	30	60	30	73	80	20	35	105	125	35	3/8	70	95	13	41	215	295	255	40	25	45	60	45	
Ø80	M70 *P2.0	40	M30 *P1.5	45	20	30	60	30	95	95	20	40	127.5	150	50	1/2	90	120	13	41	240	325	280	45	30	50	70	50	
Ø100	M90 *P2.0	50	M40 *P2.0	55	25	30	60	30	114	120	20	40	147.5	180	60	1/2	110	150	15	55	265	365	320	45	30	60	90	55	
Ø125	M120 *P2.0	60	M50 *P2.0	70	30	30	70	40	140	150	20	50	172.5	210	70	3/4	125	170	15	65	305	420	370	50	35	70	100	65	

FA Type

140 kgf/cm² 圓型油壓缸



規格	尺寸	ØB	C	E	F	H	ØI	N	P	P1	PM	PT	S	S1	T	ZF	ZM	ØFD	FT	FR	FX	FY	FZ
Ø40		20	M16 *p1.5	28	17	50	50	25	86	107	30	3/8	61	82	8	136	199	12	11	93	50	115	72
Ø50		25	M22 *p1.5	40	20	50	60	30	96	112	35	3/8	66	87	10	146	207	14	17	110	56	150	85
Ø63		35	M30 *p1.5	45	20	60	73	35	105	125	35	3/8	70	95	13	165	235	14	17	126	68	155	95
Ø80		40	M30 *p1.5	45	20	60	95	40	127.5	150	50	1/2	95	120	13	195	260	18	20	152	75	190	120
Ø100		50	M40 *p2.0	55	25	60	114	40	147.5	180	60	1/2	110	150	15	210	295	20	20	180	100	220	140
Ø125		60	M50 *p2.0	70	30	70	140	50	172.5	210	70	3/4	125	170	15	245	340	24	30	222	122	280	170

YM

YH

YKH

YS

YR

YCR

YHS

YHR

YT

YMT

ACC

YM

YH

YKH

YS

YR

YCR

YHS

YHR

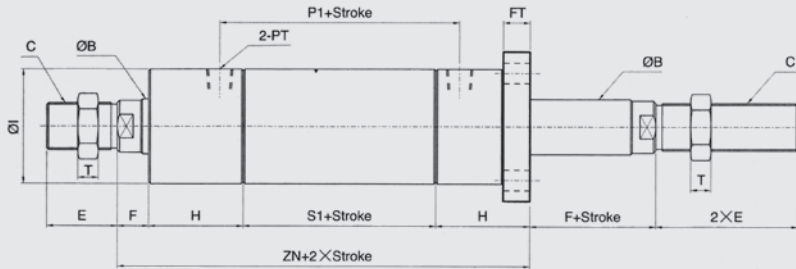
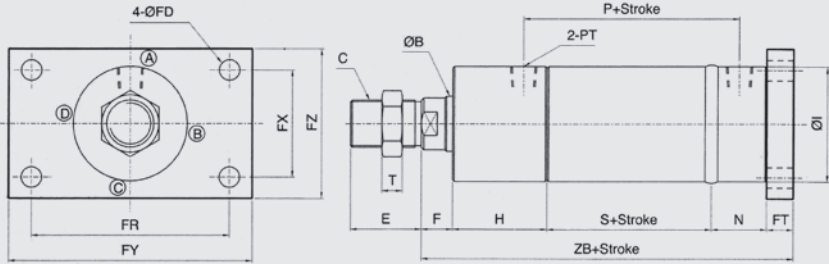
YT

YMT

ACC

140 kg/cm² 圓型油壓缸

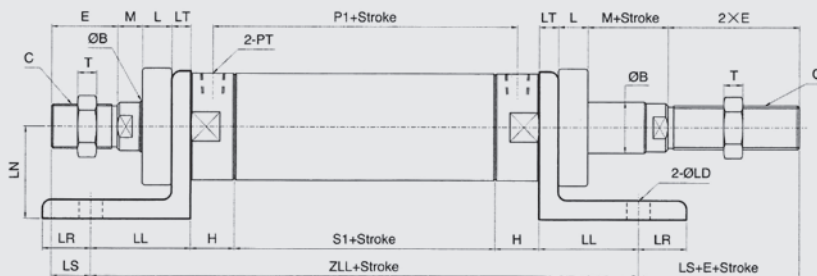
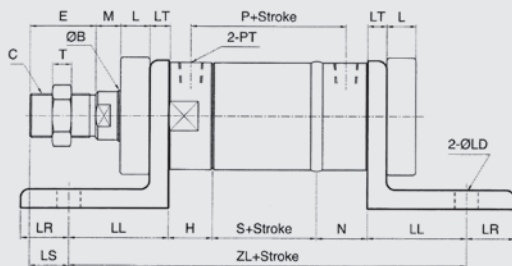
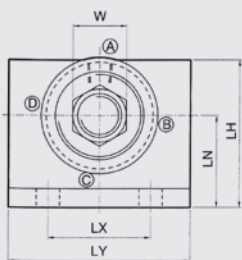
FB Type



規格	尺寸	ØB	C	E	F	H	ØI	N	P	P1	PM	PT	S	S1	T	ZB	ZN	ØFD	FT	FR	FX	FY	FZ
Ø40		20	M16 *P1.5	28	17	50	50	25	86	107	30	3/8	61	82	8	164	199	12	11	93	50	115	72
Ø50		25	M22 *P1.5	40	20	50	60	30	96	112	35	3/8	66	87	10	183	207	14	17	110	56	150	85
Ø63		35	M30 *P1.5	45	20	60	73	35	105	125	35	3/8	70	95	13	202	235	14	17	126	68	155	95
Ø80		40	M30 *P1.5	45	20	60	95	40	127.5	150	50	1/2	90	120	13	230	260	18	20	152	75	190	120
Ø100		50	M40 *P2.0	55	25	60	114	40	147.5	180	60	1/2	110	150	15	255	295	20	20	180	100	220	140
Ø125		60	M50 *P2.0	70	30	70	140	50	172.5	210	70	3/4	125	170	15	305	340	24	30	222	122	280	170

LB Type

140 kg/cm² 圓型油壓缸



規格	尺寸	ØB	C	E	M	H	N	L	LS	P	P1	PM	PT	S	S1	T	ZL	ZLL	ØLD	LH	LN	LL	LR	LT	LX	LY
Ø40		20	M16 *P1.5	28	18	25	25	15	25	86	107	30	3/8	61	82	8	201	222	12	75	47	45	30	9	60	88
Ø50		25	M22 *P1.5	40	18	25	30	15	30	96	112	35	3/8	66	87	10	231	247	14	88	57	55	33	9	70	100
Ø63		35	M30 *P1.5	45	17	30	35	20	29	105	125	35	3/8	70	95	13	271	291	16	101	63	68	33	13	70	124
Ø80		40	M30 *P1.5	45	17	30	40	20	29	127.5	150	50	1/2	90	120	13	296	316	18	101	60	68	33	13	80	140
Ø100		50	M40 *P2.0	55	20	30	40	20	40	147.5	180	60	1/2	110	150	15	320	350	18	140	80	70	35	15	90	144
Ø125		60	M50 *P2.0	70	25	40	50	20	60	172.5	210	70	3/4	125	170	15	375	410	22	190	110	80	40	20	120	160

YM

YH

YKH

YS

YR

YCR

YHS

YHR

YT

YMT

ACC

YM

YH

YKH

YS

YR

YCR

YHS

YHR

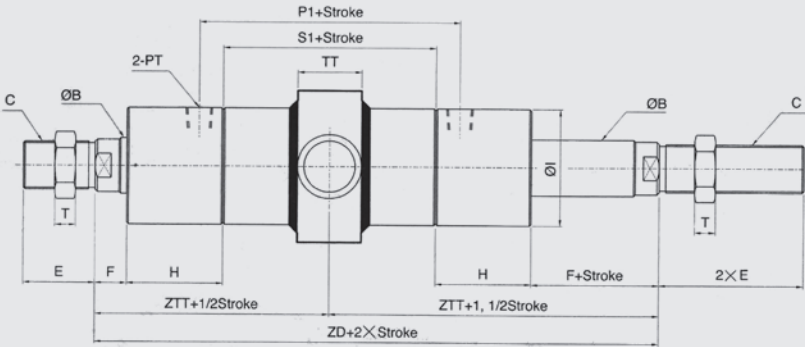
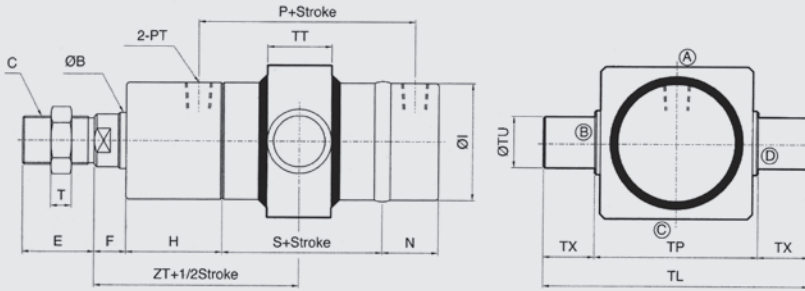
YT

YMT

ACC

140 kgf/cm² 圓型油壓缸

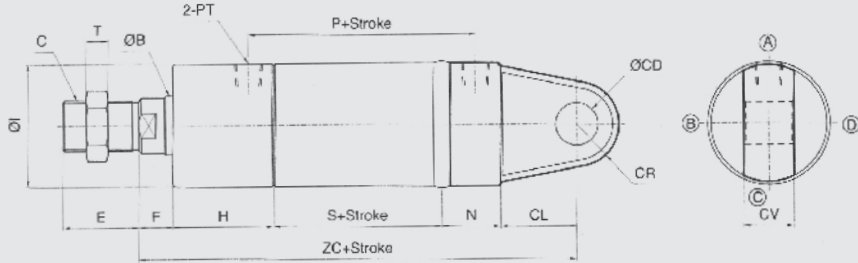
TC Type



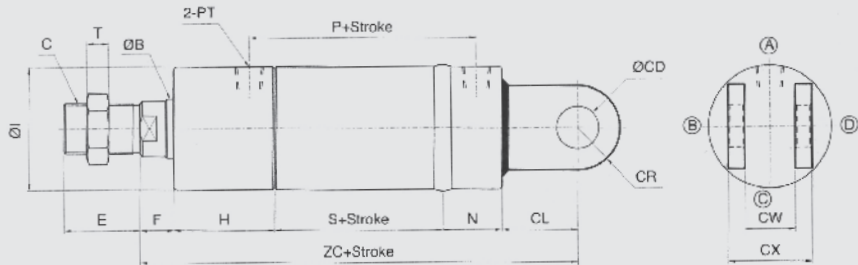
規格	尺寸	ØB	C	E	F	H	ØI	N	P	P1	PM	PT	S	S1	T	ZT	ZTT	ZD	ØTU	TL	TP	TT	TX
Ø40		20	M16 *P1.5	28	17	50	50	25	86	107	30	3/8	61	82	8	97.5	108	216	20	115	75	28	20
Ø50		25	M22 *P1.5	40	20	50	60	30	96	112	35	3/8	66	87	10	103	113.5	227	25	140	90	33	25
Ø63		35	M30 *P1.5	45	20	60	73	35	105	125	35	3/8	70	95	13	115	127.5	255	32	166	102	40	32
Ø80		40	M30 *P1.5	45	20	60	95	40	127.5	150	50	1/2	90	120	13	125	140	280	32	184	120	43	32
Ø100		50	M40 *P2.0	55	25	60	114	40	147.5	180	60	1/2	110	150	15	140	160	320	40	220	140	53	40
Ø125		60	M50 *P2.0	70	30	70	140	50	172.5	210	70	3/4	125	170	15	162.5	185	370	50	275	175	58	50

140 kg/cm² 圓型油壓缸

CA Type



CB Type



規格	尺寸	ØB	C	E	F	H	ØI	N	P	PM	PT	S	T	ZC	ØCD	CL	CR	CV	CW	CX
Ø40	M16 *P1.5	20	28	17	50	50	25	86	30	3/8	61	8	178	16	25	18	25	26	41	
Ø50	M22 *P1.5	25	40	20	50	60	30	96	35	3/8	66	13	201	20	35	25	25	26	46	
Ø63	M30 *P1.5	35	45	20	60	73	35	105	35	3/8	70	13	230	25	45	30	30	31	56	
Ø80	M30 *P1.5	40	45	20	60	95	40	127.5	50	1/2	90	13	260	30	50	30	35	36	66	
Ø100	M40 *P2.0	50	55	25	60	114	40	147.5	60	1/2	110	15	295	35	60	35	40	41	81	
Ø125	M50 *P2.0	60	70	30	70	140	50	172.5	70	3/4	125	15	345	50	70	50	55	56	106	

YM

YH

YKH

YS

YR

YCR

YHS

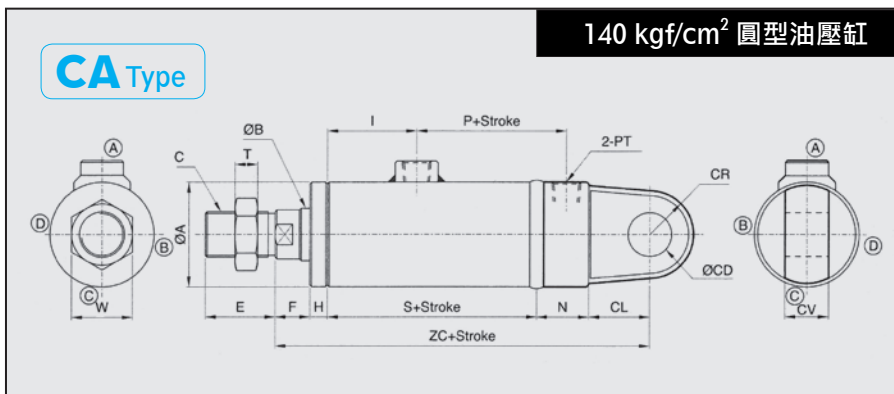
YHR

YT

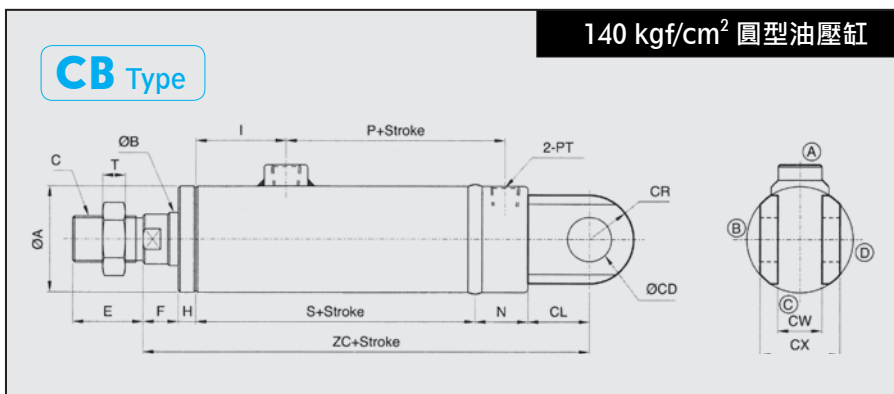
YMT

ACC

YCR
圓型油壓缸



規格	尺寸	ØA	ØB	C	E	F	H	I	N	P	PM	PT	S	W	T	ZC	ØCD	CL	CV	CR
	Ø50	60	30	M26 *P1.5	40	20	10	56	30	71	45	3/8	110	35	12	205	25	35	25	25
	Ø63	73	35	M30 *P1.5	45	25	10	56	35	79	50	3/8	115	41	13	230	30	45	30	30
	Ø80	95	40	M30 *P1.5	50	25	15	64	40	83	50	3/8	125	41	13	255	30	50	35	30
	Ø100	114	50	M40 *P2.0	55	25	20	78	40	94	60	1/2	150	55	15	295	35	60	40	35
	Ø125	140	60	M50 *P2.0	70	35	20	78	50	109	70	1/2	160	65	15	335	50	70	55	50



規格	尺寸	ØA	ØB	C	E	F	H	I	N	P	PM	PT	S	T	ZC	ØCD	CL	CR	CW	CX
	Ø50	60	30	M26 *P1.5	40	20	10	56	30	71	45	3/8	110	12	205	25	35	25	26	46
	Ø63	73	35	M30 *P1.5	45	25	10	56	35	79	50	3/8	115	13	230	30	45	30	31	56
	Ø80	95	40	M30 *P1.5	50	25	15	64	40	83	50	3/8	125	13	255	30	50	30	36	66
	Ø100	114	50	M40 *P2.0	55	25	20	78	40	94	60	1/2	150	15	295	35	60	35	41	81
	Ø125	140	60	M50 *P2.0	70	35	20	78	50	109	70	1/2	160	15	335	50	70	50	56	106

YM

YH

YKH

YS

YR

YCR

YHS

YHR

YT

YMT

ACC

YM

YH

YKH

YS

YR

YCR

YHS

YHR

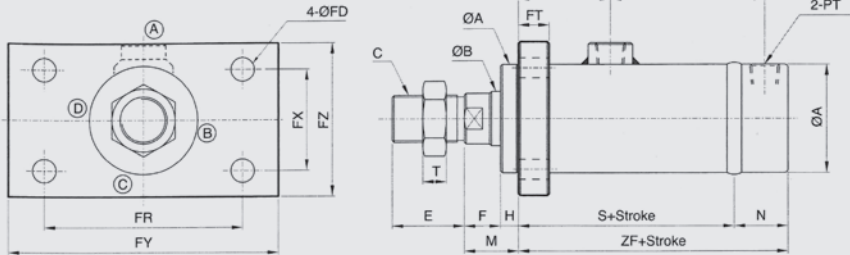
YT

YMT

ACC

140 kgf/cm² 圓型油壓缸

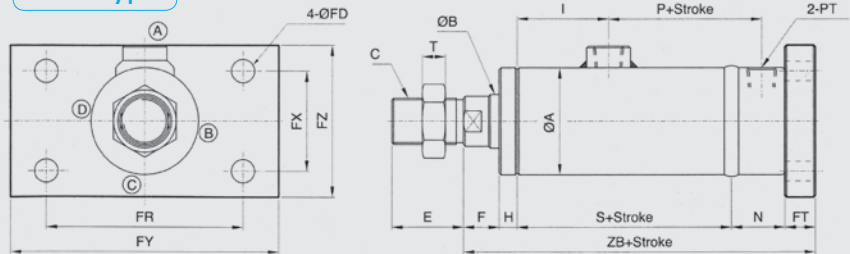
FA Type



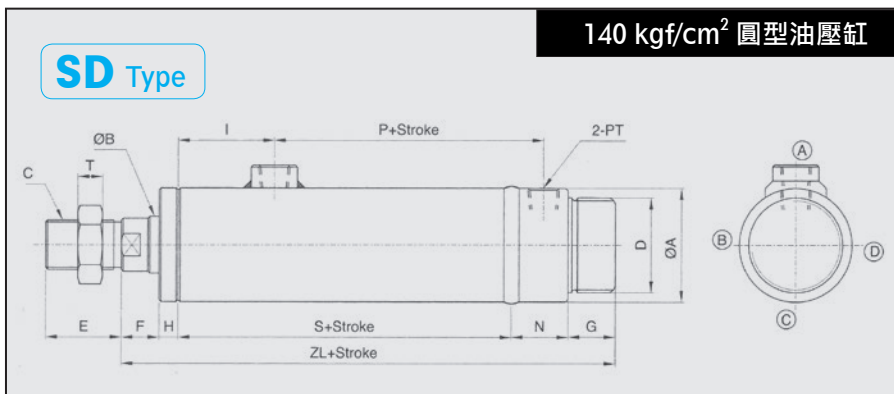
規格	尺寸	ØA	ØB	C	E	F	H	I	M	N	P	PM	PT	S	T	ZF	ØFD	FT	FR	FX	FY	FZ
Ø50		60	30	M26 *P1.5	40	20	10	56	30	30	71	45	3/8	110	12	140	14	17	110	56	150	85
Ø63		73	35	M30 *P1.5	45	25	10	56	35	35	79	50	3/8	115	13	150	14	17	126	68	155	95
Ø80		95	40	M30 *P1.5	50	25	15	64	40	40	83	50	3/8	125	13	165	18	20	152	75	190	120
Ø100		114	50	M40 *P2.0	55	25	20	78	45	40	94	60	1/2	150	15	190	20	20	180	100	220	140
Ø125		140	60	M50 *P2.0	70	35	20	78	55	50	109	70	1/2	160	15	210	24	30	222	122	280	170

140 kgf/cm² 圓型油壓缸

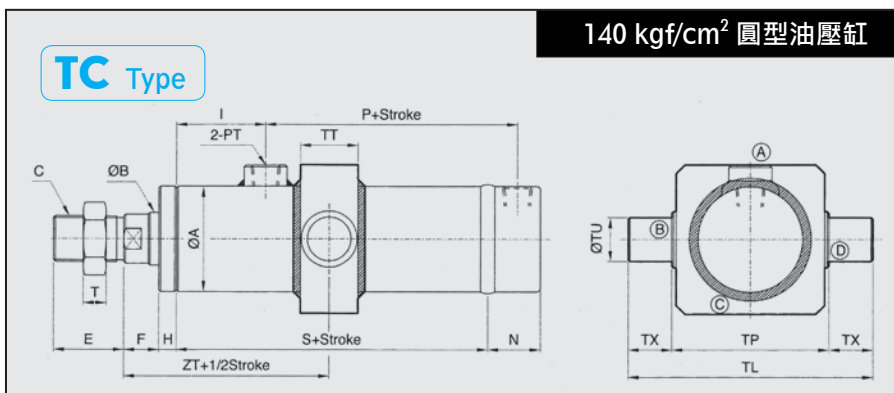
FB Type



規格	尺寸	ØA	ØB	C	E	F	H	I	N	P	PM	PT	S	T	ZB	ØFD	FT	FR	FX	FY	FZ
Ø50		60	30	M26 *P1.5	40	20	10	56	30	71	45	3/8	110	12	187	14	17	110	56	150	85
Ø63		73	35	M30 *P1.5	45	25	10	56	35	79	50	3/8	115	13	202	14	17	126	68	155	95
Ø80		95	40	M30 *P1.5	50	25	15	64	40	83	50	3/8	125	13	225	18	20	152	75	190	120
Ø100		114	50	M40 *P2.0	55	25	20	78	40	94	60	1/2	150	15	255	20	20	180	100	220	140
Ø125		140	60	M50 *P2.0	70	35	20	78	50	109	70	1/2	160	15	295	24	30	222	122	280	170



規格	尺寸	ØA	ØB	C	D	E	F	G	H	I	N	P	PM	PT	S	T	ZL
Ø50		60	30	M26 *P1.5	M50 *P2.0	40	20	25	10	56	30	71	45	3/8	110	12	195
Ø63		73	35	M30 *P1.5	M60 *P2.0	45	25	30	10	56	35	79	50	3/8	115	13	215
Ø80		95	40	M30 *P1.5	M70 *P2.0	50	25	30	15	64	40	83	50	3/8	125	13	235
Ø100		114	50	M40 *P2.0	M90 *P2.0	55	25	30	20	78	40	94	60	1/2	150	15	265
Ø125		140	60	M50 *P2.0	M120 *P2.0	70	36	30	20	78	50	109	70	1/2	160	15	295



規格	尺寸	ØA	ØB	C	E	F	H	I	N	P	PM	PT	S	T	ZT	ØTU	TP	TL	TT	TX
Ø50		60	30	M26 *P1.5	40	20	10	56	30	71	45	3/8	110	12	85	25	90	140	33	25
Ø63		73	35	M30 *P1.5	45	25	10	56	35	79	50	3/8	115	13	92.5	32	102	166	40	32
Ø80		95	40	M30 *P1.5	50	25	15	64	40	83	50	3/8	125	13	102.5	32	120	184	43	32
Ø100		114	50	M40 *P2.0	55	25	20	78	40	94	60	1/2	150	15	120	40	140	220	53	40
Ø125		140	60	M50 *P2.0	70	35	20	78	50	109	70	1/2	160	15	135	50	175	275	58	50

YM

YH

YKH

YS

YR

YCR

YHS

YHR

YT

YMT

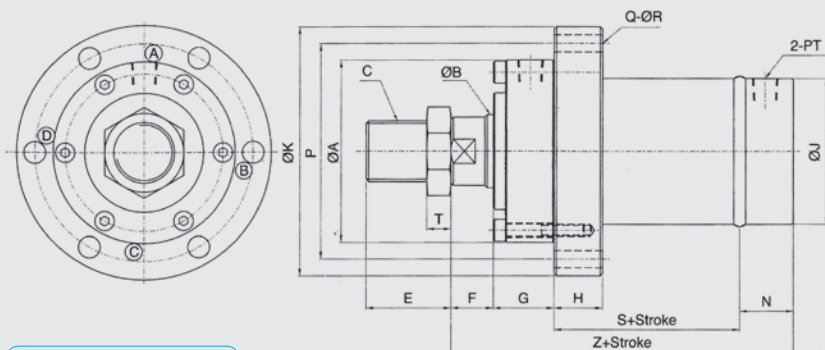
ACC

YHS

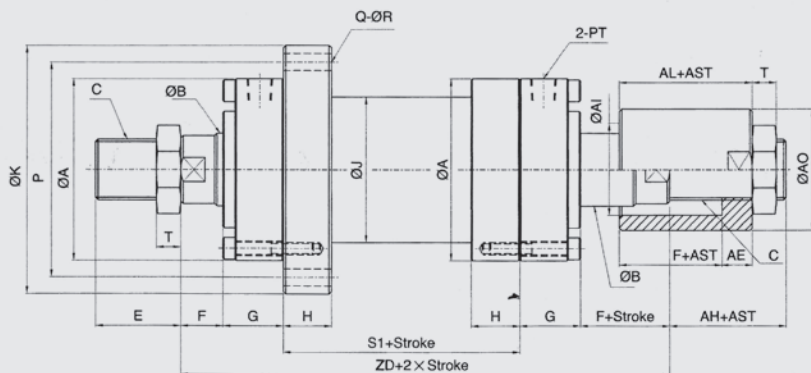
圓型油壓缸

210 kg/cm² 圓型油壓缸

FA Type



FA (雙軸) Type



規格	尺寸	A	ØB	C	E	F	G	H	J	K	N	P	PM	PT	Q	R	S	S1	T	Z	ZD	AH	AE	AI	AL	AO
Ø40		72	25	M22* P1.5	35	20	40	20	50	115	30	95	30	3/8	4	10	60	60	10	150	180	35	20	32	40	45
Ø50		90	30	M26* P1.5	40	20	40	25	60	140	35	115	35	3/8	6	10	65	65	12	160	185	40	25	37	45	50
Ø63		110	35	M30* P1.5	45	20	40	30	76	160	40	135	35	1/2	6	12	65	65	13	165	185	40	25	42	45	60
Ø80		130	40	M36* P2.5	55	25	50	35	100	190	40	160	50	1/2	6	14	80	80	15	195	230	45	30	47	55	70
Ø100		150	50	M40* P2.0	60	30	55	40	120	210	50	180	60	1/2	6	18	90	90	15	225	260	50	35	57	65	90

YM

YH

YKH

YS

YR

YCR

YHS

YHR

YT

YMT

ACC

YM

YH

YKH

YS

YR

YCR

YHS

YHR

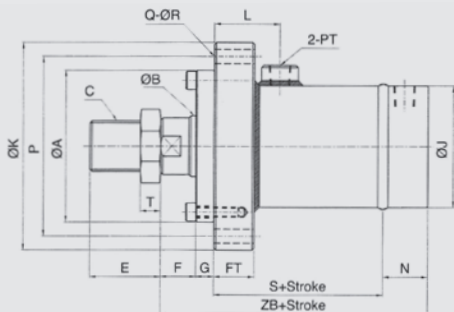
YT

YMT

ACC

210 kgf/cm² 圓型油壓缸

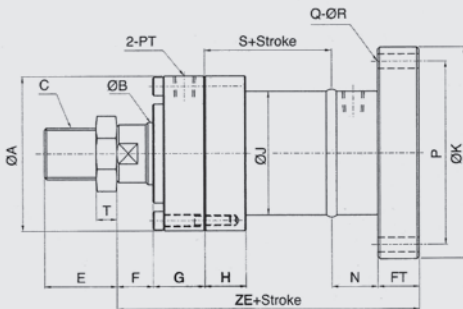
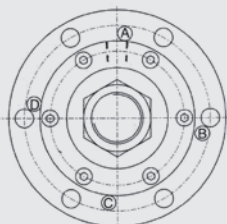
FA (焊油籽) Type



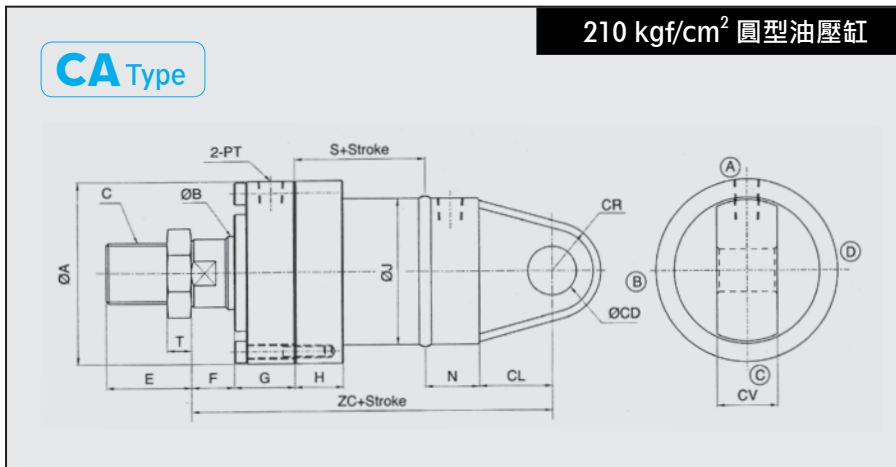
規格	尺寸	A	ØB	C	E	F	G	FT	J	K	L	N	P	PM	PT	Q	R	S	T	ZB
Ø40		75	25	M22* P1.5	35	20	15	20	50	115	40	30	95	30	3/8	4	10	90	10	155
Ø50		90	30	M26* P1.5	40	20	15	25	60	140	45	35	115	35	3/8	6	10	100	12	170
Ø63		110	35	M30* P1.5	45	20	15	30	76	160	55	40	135	35	1/2	6	12	110	13	185
Ø80		130	40	M36* P2.0	55	25	20	35	100	190	60	40	160	50	1/2	6	14	130	15	215
Ø100		150	50	M40* P2.0	60	30	20	40	120	210	70	50	180	60	1/2	6	18	150	15	250

210 kgf/cm² 圓型油壓缸

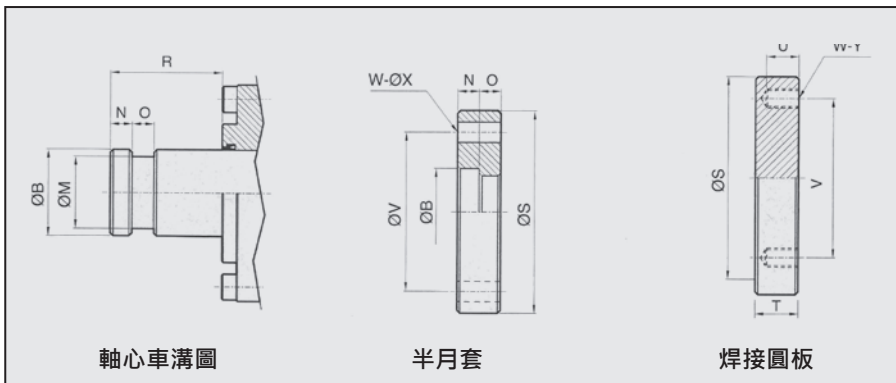
FB Type



規格	尺寸	A	ØB	C	E	F	FT	G	H	J	K	N	P	PM	PT	Q	R	S	T	ZE
Ø40		75	25	M22* P1.5	35	20	20	40	20	50	115	30	95	30	3/8	4	10	60	10	170
Ø50		90	30	M26* P1.5	40	20	25	40	25	60	140	35	115	35	3/8	6	10	65	12	185
Ø63		110	35	M30* P1.5	45	20	30	40	30	76	160	40	135	35	1/2	6	12	65	13	195
Ø80		130	40	M36* P2.0	55	25	35	50	35	100	190	40	160	50	1/2	6	14	80	15	230
Ø100		150	50	M40* P2.0	60	30	40	55	40	120	210	50	180	60	1/2	6	18	90	15	265



規格	尺寸	A	ØB	C	E	F	G	H	J	N	PM	PT	Q	R	S	T	ZC	CD	CL	CV	CR
Ø40		75	25	M22 ⁺ P1.5	35	20	40	20	50	30	30	3/8	4	10	60	10	185	20	35	25	25
Ø50		90	30	M26 ⁺ P1.5	40	20	40	25	60	35	35	3/8	6	10	65	12	205	25	45	30	30
Ø60		110	35	M30 ⁺ P1.5	45	20	40	30	76	40	35	1/2	6	12	65	13	215	30	50	35	30
Ø80		130	40	M36 ⁺ P2.0	55	25	50	35	100	40	50	1/2	6	14	80	15	255	35	60	40	35
Ø100		150	50	M40 ⁺ P2.0	60	30	55	40	120	50	60	1/2	6	18	90	15	295	50	70	55	50



規格	尺寸	ØB	ØM	N	O	R	ØB	ØM	N	O	S	V	W	ØX	S	T	U	V	W	Y
Ø40		25	18	8	8	40	25	18	8	8	75	50	4	10	75	20	14	50	4	M8*P1.25
Ø50		30	22	10	10	45	30	22	10	10	85	60	4	10	85	25	20	60	4	M8*P1.25
Ø60		35	27	10	10	45	35	27	10	10	105	75	6	10	105	25	20	75	6	M8*P1.25
Ø80		40	32	10	10	50	40	32	10	10	120	90	6	12	120	25	20	90	6	M10*P1.5
Ø100		50	42	15	15	60	50	42	15	15	130	100	6	12	130	30	25	100	6	M10*P1.5

YM

YH

YKH

YS

YR

YCR

YHS

YHR

YT

YMT

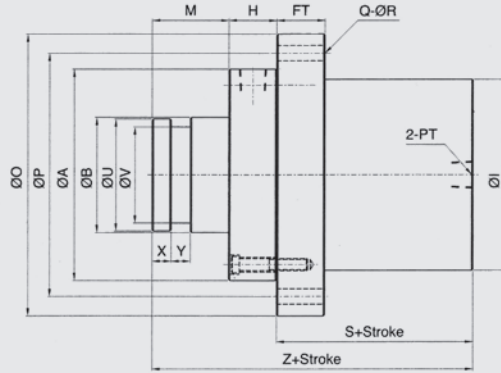
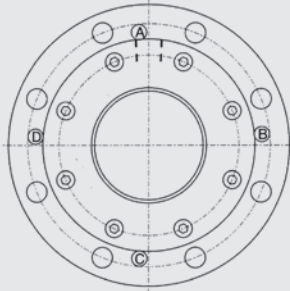
ACC

YHR

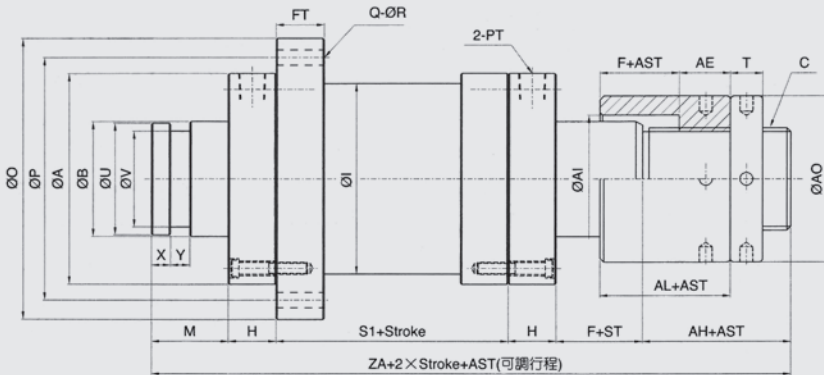
大型圓型油壓缸

210 kg/cm² 大型圓型油壓缸

FA Type



FA (雙軸) Type



規格	尺寸																											
	A	B	C	F	FT	H	I	M	O	P	PM	PT	Q	R	S	S1	T	U	V	X	Y	Z	ZA	AH	AE	AI	AO	AL
Ø125	175	60	M50 *P2.0	25	45	50	152	80	240	210	60	3/4	6	18	125	100	15	60	50	15	15	255	355	50	35	70	100	60
Ø150	200	80	M70 *P2.0	25	50	50	175	80	280	240	60	1	6	18	130	100	20	80	70	15	15	260	365	60	40	95	120	65
Ø180	240	100	M90 *P2.0	30	60	60	216	100	320	280	70	1	6	18	150	110	30	95	85	20	20	310	430	70	40	120	150	70
Ø200	260	120	M100 *P2.0	30	65	70	242	100	350	310	70	1.1/4	6	20	155	110	30	115	100	25	25	325	450	70	40	140	180	70
Ø225	290	140	M120 *P3.0	30	70	70	270	120	380	340	70	1.1/4	8	20	160	110	30	135	120	25	25	350	475	75	45	160	200	75
Ø250	330	160	M140 *P3.0	30	75	75	298	120	440	380	70	1.1/4	8	24	170	120	35	155	140	30	30	365	505	85	50	190	240	80
Ø280	360	180	M160 *P3.0	30	80	80	330	150	500	430	70	1.1/2	10	26	175	120	40	175	150	30	30	405	550	90	50	210	260	80
Ø300	380	200	M180 *P3.0	35	85	90	350	150	550	460	90	1.1/2	10	28	200	140	40	195	170	35	35	440	605	100	60	230	290	95

YM

YH

YKH

YS

YR

YCR

YHS

YHR

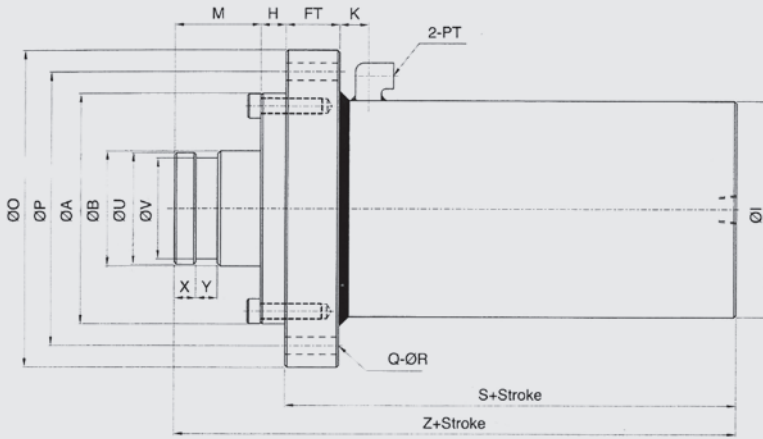
YT

YMT

ACC

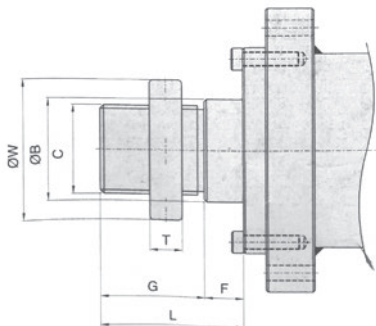
210 kgf/cm² 大型圓型油壓缸

FA (焊油接頭) Type



尺寸 規格	A	B	FT	H	I	K	M	O	P	PM	PT	Q	R	S	U	V	X	Y	Z
Ø125	180	60	45	20	152	30	80	240	210	60	3/4	6	18	190	60	50	15	15	290
Ø150	205	80	50	20	175	30	80	280	240	60	1	6	18	200	80	70	15	15	300
Ø180	245	100	60	30	216	30	100	320	280	70	1	6	18	230	95	85	20	20	360
Ø200	265	120	65	30	242	35	100	350	310	70	1.1/4	6	20	250	115	100	25	25	380
Ø225	295	140	70	35	270	35	120	380	340	70	1.1/4	8	20	260	135	120	25	25	415
Ø250	335	160	75	35	298	40	120	440	380	70	1.1/4	8	24	275	155	140	30	30	430
Ø280	365	180	80	40	330	40	150	500	430	70	1.1/2	10	26	290	175	150	30	30	480
Ø300	385	200	85	40	350	45	150	550	460	90	1.1/2	10	28	320	195	170	35	35	510

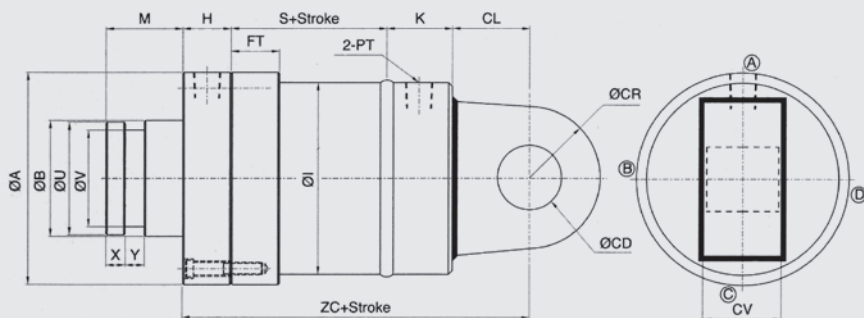
外牙型規格表



尺寸 規格	B	C	F	G	L	T	W
Ø125	60	M50*P2.0	25	70	95	15	65
Ø150	80	M70*P2.0	25	80	105	20	95
Ø180	100	M90*P2.0	30	100	130	30	120
Ø200	120	M100*P2.0	30	120	150	30	140
Ø225	140	M120*P3.0	30	140	170	30	160
Ø250	160	M140*P3.0	30	150	180	35	190
Ø280	180	M160*P4.0	30	160	190	40	210
Ø300	200	M180*P4.0	35	160	195	40	230

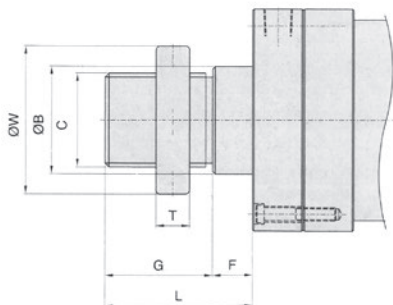
210 kg/cm² 大型圓型油壓缸

CA Type



規格	尺寸																		
	A	B	H	I	FT	K	M	PM	PT	S	U	V	X	Y	ZC	CD	CL	CR	CV
Ø125	175	60	50	152	45	50	80	60	3/4	100	60	50	15	15	270	50	70	50	55
Ø150	200	80	50	175	50	55	80	60	1	100	80	70	15	15	285	60	80	60	60
Ø180	240	100	60	216	60	55	100	70	1	110	95	85	20	20	325	70	100	70	80
Ø200	260	120	70	242	65	65	100	70	1.1/4	110	115	100	25	25	355	80	110	80	90
Ø225	290	140	70	270	70	65	120	70	1.1/4	110	135	120	25	25	365	90	120	90	100
Ø250	330	160	75	298	75	70	120	70	1.1/4	115	155	140	30	30	410	100	150	100	120
Ø280	360	180	80	330	80	80	150	70	1.1/2	115	175	150	30	30	425	100	150	100	120
Ø300	380	200	90	350	85	80	150	90	1.1/2	135	195	170	35	35	465	120	160	120	140

外牙型規格表



規格	尺寸						
	B	C	F	G	L	T	W
Ø125	60	M50*P2.0	25	70	95	15	65
Ø150	80	M70*P2.0	25	80	105	20	95
Ø180	100	M90*P2.0	30	100	130	30	120
Ø200	120	M100*P2.0	30	120	150	30	140
Ø225	140	M120*P3.0	30	140	170	30	160
Ø250	160	M140*P3.0	30	150	180	35	190
Ø280	180	M160*P4.0	30	160	190	40	210
Ø300	200	M180*P4.0	35	160	195	40	230

YM

YH

YKH

YS

YR

YCR

YHS

YHR

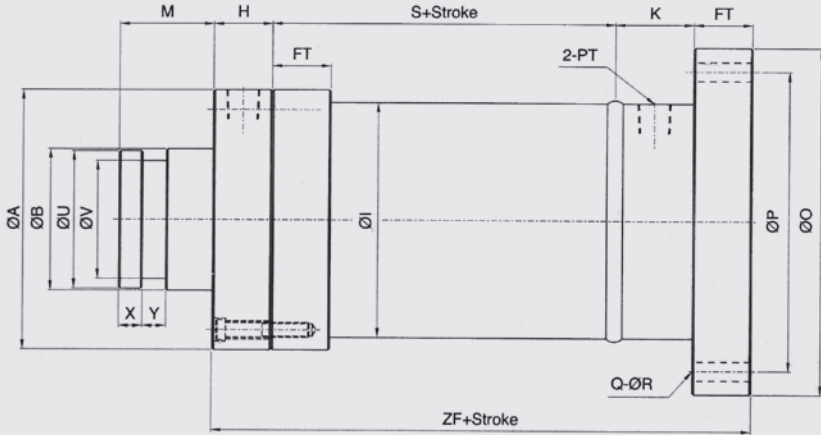
YT

YMT

ACC

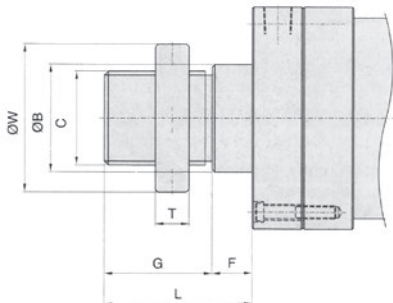
210 kg/cm² 大型圓型油壓缸

FB Type

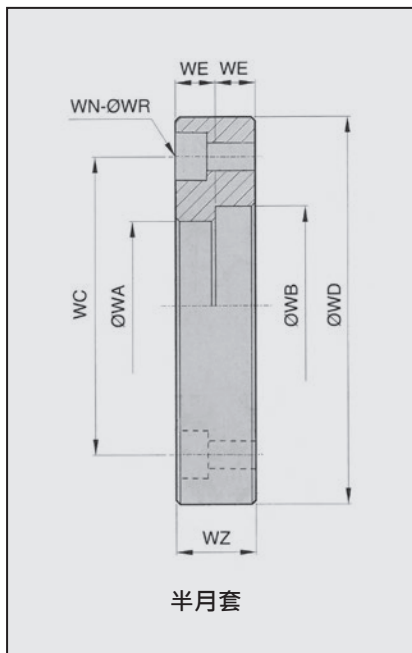


規格	A	B	FT	H	I	K	M	O	P	PM	PT	Q	R	S	U	V	X	Y	ZF
Ø125	175	60	45	50	152	50	80	240	190	60	3/4	6	18	100	60	50	15	15	245
Ø150	200	80	50	50	175	55	80	280	240	60	1	6	18	100	80	70	15	15	255
Ø180	240	100	60	60	216	55	100	320	280	70	1	6	18	110	95	85	20	20	285
Ø200	260	120	65	70	242	65	100	350	310	70	1.1/4	6	20	110	115	100	25	25	310
Ø225	290	140	70	70	270	65	120	380	340	70	1.1/4	8	20	110	135	120	25	25	315
Ø250	330	160	75	75	298	70	120	440	380	70	1.1/4	8	24	115	155	140	30	30	335
Ø280	360	180	80	80	330	80	150	500	430	70	1.1/2	10	26	115	175	150	30	30	355
Ø300	380	200	85	90	350	80	150	550	460	90	1.1/2	10	28	135	195	170	35	35	390

外牙型規格表

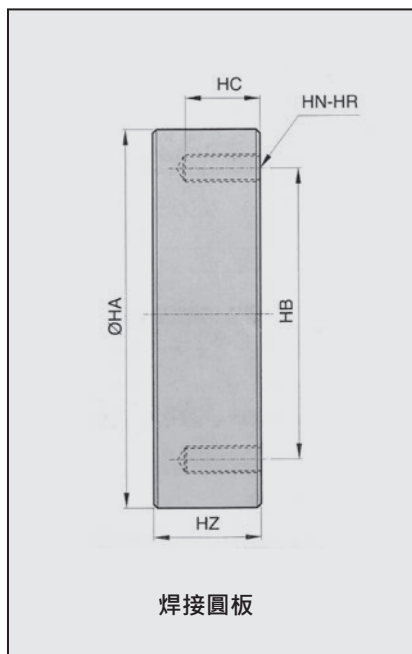


規格	B	C	F	G	L	T	W
Ø125	60	M50*P2.0	25	70	95	15	65
Ø150	80	M70*P2.0	25	80	105	20	95
Ø180	100	M90*P2.0	30	100	130	30	120
Ø200	120	M100*P2.0	30	120	150	30	140
Ø225	140	M120*P3.0	30	140	170	30	160
Ø250	160	M140*P3.0	30	150	180	35	190
Ø280	180	M160*P4.0	30	160	190	40	210
Ø300	200	M180*P4.0	35	160	195	40	230



半月套

尺寸规格	WA	WB	WC	WD	WE	WE	WN	WR	WZ
Ø125	50	60	90	120	15	15	6	12	30
Ø150	70	80	110	140	15	15	6	12	30
Ø180	85	95	140	180	20	20	6	14	40
Ø200	100	115	160	200	25	25	6	14	50
Ø225	120	135	180	220	25	25	8	18	50
Ø250	140	155	210	260	30	30	8	18	60
Ø280	150	175	240	300	30	30	8	22	60
Ø300	170	195	260	320	35	35	8	22	70



焊接圆板

尺寸规格	HA	HB	HC	HN	HR	HZ
Ø125	120	90	30	6	M10*P1.5	40
Ø150	140	110	30	6	M10*P1.5	40
Ø180	180	140	35	6	M12*P1.75	45
Ø200	200	160	35	6	M12*P1.75	45
Ø225	220	180	40	8	M16*P2.0	50
Ø250	260	210	40	8	M16*P2.0	50
Ø280	300	240	45	8	M20*P2.5	55
Ø300	320	260	50	8	M20*P2.5	60

YM

YH

YKH

YS

YR

YCR

YHS

YHR

YT

YMT

ACC

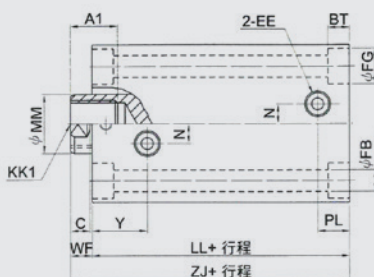
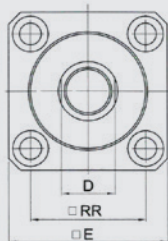
YT

薄型油壓缸

140 kg/cm² 薄型油壓缸

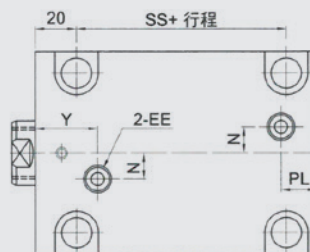
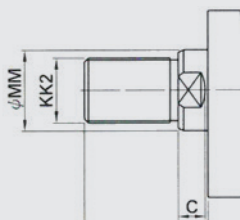
SD Type

內牙型



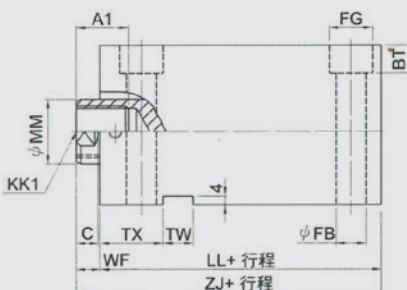
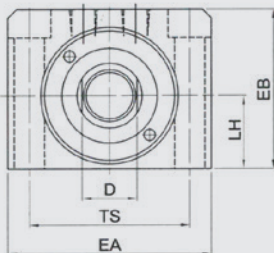
SD/LA 共用

外牙型



LA Type

內牙型



尺寸 規格	內牙		外牙		C	D	E	EA	EB	EE	LH	LL	MM	N	BT		FB		FG		PL	SS	TS	RR	TW	TX	WF	Y	ZJ
	A1	KK1	A2	KK2											SD	LA	SD	LA	SD	LA									
Ø20	10	M8*P1.25	15	M8*P1.0	7	10	44	--	--	Rc1/8	--	43	12	0	5.4	--	5.5	--	9.5	--	12	--	--	30	--	--	8	20.5	51
Ø25	12	M10*P1.5	20	M10*P1.5	7	13	50	--	--	Rc1/8	--	45	14	0	5.4	--	5.5	--	9.5	--	12	--	--	36	--	--	8	20.5	53
Ø32	15	M12*P1.75	25	M16*P1.5	9	17	62	70	56	Rc1/4	25	54	20	10	6.5	8.6	7	9	11	14	10.5	24	56	47	12	28	10	27	64
Ø40	20	M16*P2.0	30	M20*P1.5	9	21	70	80	64	Rc1/4	29	55	25	10	8.6	10.8	9	11	14	17.5	11	23	62	52	12	28	10	27	65
Ø50	24	M20*P2.5	35	M24*P1.5	9	27	80	94	74	Rc1/4	34	60	30	10	10.8	13	11	14	18	20	11	27	74	58	14	29	11	28	71
Ø63	33	M27*P3.0	45	M30*P1.5	11	32	94	114	89	Rc1/4	42	67	35	10	13	15.2	14	16	20	23	11	32	90	69	16	31	13	30	80
Ø80	33	M30*P3.5	55	M36*P1.5	14	37	114	134	109	Rc3/8	52	78	40	15	15.2	15.2	16	16	23	23	15	41	110	86	16	34	17	35	95
Ø100	40	M36*P4.0	70	M48*P1.5	14	50	134	160	129	Rc3/8	62	82	56	15	17.5	17	18	18	26	26	15	44	134	102	16	34	17	39	99

YM

YH

YKH

YS

YR

YCR

YHS

YHR

YT

YMT

ACC

YM

YH

YKH

YS

YR

YCR

YHS

YHR

YT

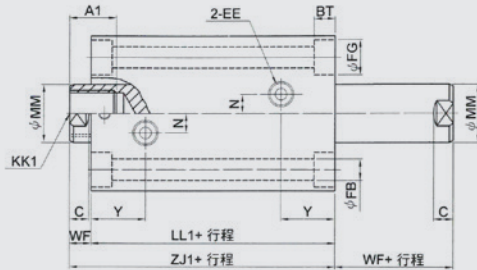
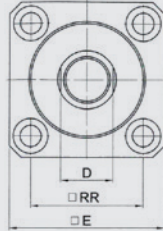
YMT

ACC

140 kg/cm² 薄型油壓缸

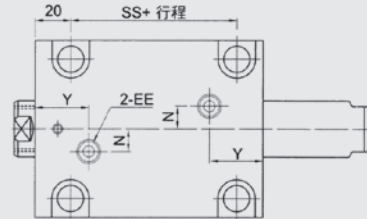
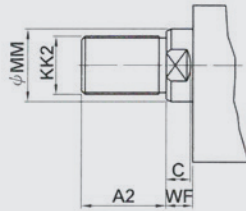
SD 雙軸 Type

內牙型



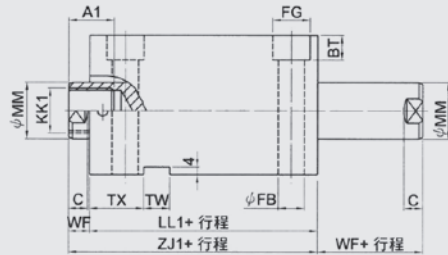
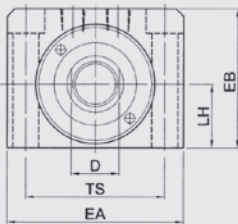
SD/LA 共用

外牙型



LA 雙軸 Type

內牙型



尺寸 規格	內牙		外牙		C	D	E	EA	EB	EE	LH	LL1	MM	N	BT		FB		FG		SS	TS	RR	TW	TX	WF	Y	ZJ1
	A1	KK1	A2	KK2											SD	LA	SD	LA	SD	LA								
Ø20	10	M8*P1.25	15	M8*P1.0	7	10	44	--	--	Rc1/8	--	54	12	0	5.4	--	5.5	--	9.5	--	--	--	30	--	--	8	20.5	62
Ø25	12	M10*P1.5	20	M10*P1.5	7	13	50	--	--	Rc1/8	--	56	14	0	5.4	--	5.5	--	9.5	--	--	--	36	--	--	8	20.5	64
Ø32	15	M12*P1.75	25	M16*P1.5	9	17	62	70	56	Rc1/4	25	69	20	10	6.5	8.6	7	9	11	14	24	56	47	12	28	10	27	79
Ø40	20	M16*P2.0	30	M20*P1.5	9	21	70	80	64	Rc1/4	29	71	25	10	8.6	10.8	9	11	14	17.5	23	62	52	12	28	10	27	81
Ø50	24	M20*P2.5	35	M24*P1.5	9	27	80	94	74	Rc1/4	34	77	30	10	10.8	13	11	14	18	20	27	74	58	14	29	11	28	88
Ø63	33	M27*P3.0	45	M30*P1.5	11	32	94	114	89	Rc1/4	42	83	35	10	13	15.2	14	16	20	23	32	90	69	16	31	13	30	96
Ø80	33	M30*P3.5	55	M36*P1.5	14	37	114	134	109	Rc3/8	52	95	40	15	15.2	15.2	16	16	23	23	41	110	86	16	34	17	35	112
Ø100	40	M36*P4.0	70	M48*P1.5	14	50	134	160	129	Rc3/8	62	106	56	15	17.5	17	18	18	26	26	44	134	102	16	34	17	39	123

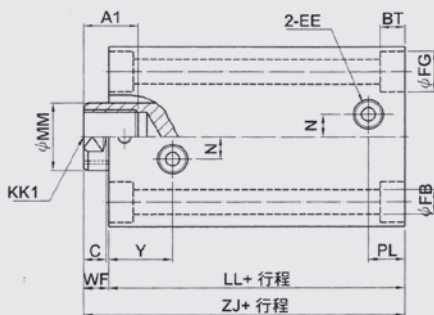
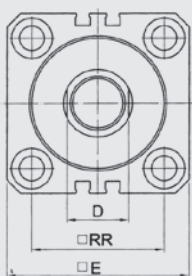
YMT

感應薄型油壓缸

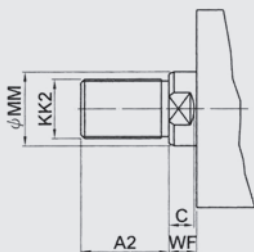
140 kg/cm² 感應薄型油壓缸

SD 雙軸 Type

內牙型

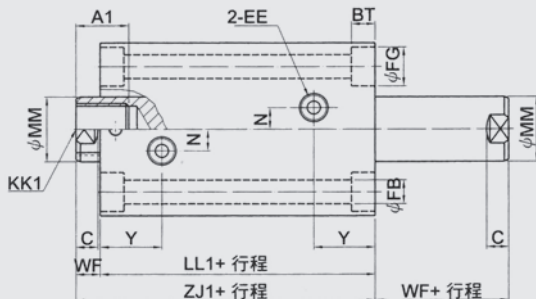
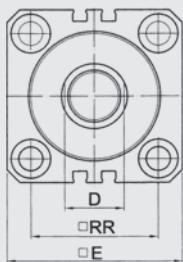


外牙型



SD 雙軸 Type

內牙型



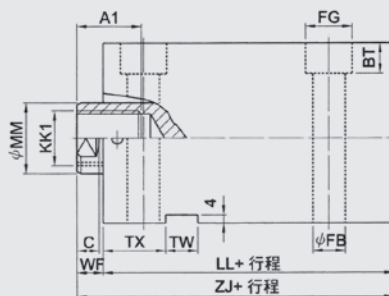
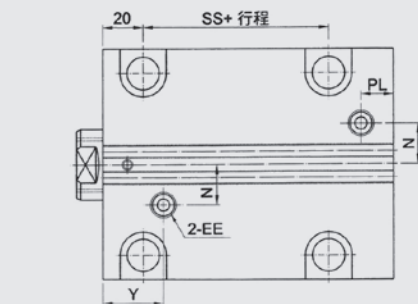
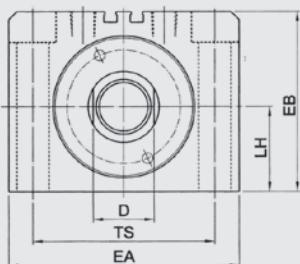
尺寸 規格	內牙		外牙		BT	C	D	E	EE	FB	FG	LL	LL1	MM	N	PL	RR	WF	Y	ZJ	ZJ1
	A1	KK1	A2	KK2																	
Ø32	15	M12*P1.75	25	M16*P1.5	6.5	9	17	62	Rc1/4	7	11	73	84	20	10	17	47	10	27	83	94
Ø40	20	M16*P2.0	30	M20*P1.5	8.6	9	21	70	Rc1/4	9	14	70	81	25	10	16	52	10	27	80	91
Ø50	24	M20*P2.5	35	M24*P1.5	10.8	9	27	80	Rc1/4	11	17.5	75	87	30	10	16	58	11	28	86	98
Ø63	33	M27*P3.0	45	M30*P1.5	13	11	32	94	Rc1/4	14	20	84	94	35	10	18	69	13	30	97	107
Ø80	33	M30*P3.5	55	M36*P1.5	15.2	14	37	114	Rc3/8	16	23	95	106	40	15	22	86	17	35	112	123
Ø100	40	M36*P4.0	70	M48*P1.5	17.5	14	50	134	Rc3/8	18	26	100	114	56	15	25	102	17	39	117	131

LA Type

內牙型

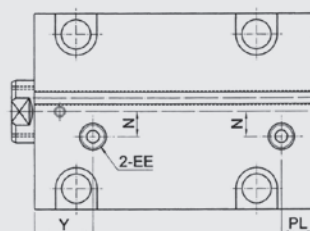
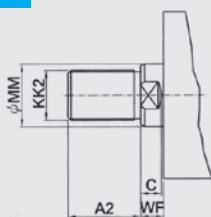
內徑：Ø63、Ø80、Ø100 雙條感應開關溝槽

140 kg/cm² 感應薄型油壓缸



外牙型

內徑：Ø40、Ø50 單條感應開關溝槽



尺寸 規格	內牙		外牙		BT	C	D	EA	EB	EE	FB	FG	LH	LL	MM	N	PL	SS	TS	TW	TX	WF	Y	ZJ
	A1	KK1	A2	KK2																				
Ø40	20	M16*P2.0	30	M20*P1.5	10.8	9	21	80	64	Rc1/4	11	18	29	70	25	10	16	23	62	12	28	10	27	80
Ø50	24	M20*P2.5	35	M24*P1.5	13	9	27	94	74	Rc1/4	14	20	34	75	30	10	16	27	74	14	29	11	28	86
Ø63	33	M27*P3.0	45	M30*P1.5	15.2	11	32	114	89	Rc1/4	16	23	42	84	35	20	18	32	90	16	31	13	30	97
Ø80	33	M30*P3.5	55	M36*P1.5	15.2	14	37	134	109	Rc3/8	16	23	52	95	40	25	22	41	110	16	34	17	35	112
Ø100	40	M36*P4.0	70	M48*P1.5	17	14	50	160	129	Rc3/8	18	26	62	100	56	25	25	44	134	16	34	17	39	117

YM

YH

YKH

YS

YR

YCR

YHS

YHR

YT

YMT

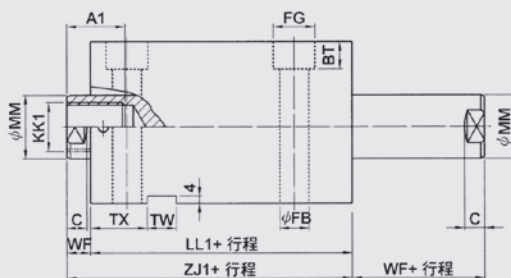
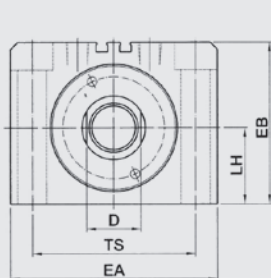
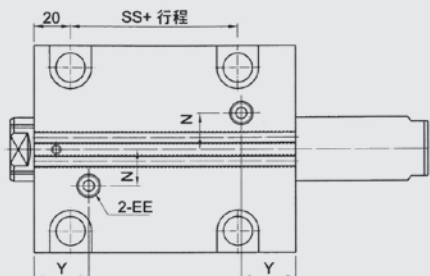
ACC

140 kg/cm² 感應薄型油壓缸

LA 雙軸 Type

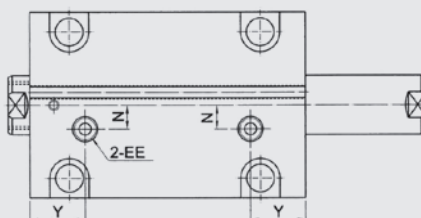
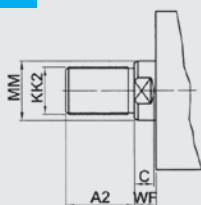
內牙型

內徑：Ø63、Ø80、Ø100 雙條感應開關溝槽



外牙型

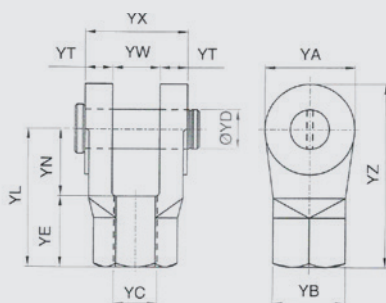
內徑：Ø40、Ø50 單條感應開關溝槽



尺寸規格	內牙		外牙		BT	C	D	EA	EB	EE	FB	FG	LH	LL1	MM	N	SS	TS	TW	TX	WF	Y	ZJ1
	A1	KK1	A2	KK2																			
Ø40	20	M16*P2.0	30	M20*P1.5	10.8	9	21	80	64	Rc1/4	11	18	29	81	25	10	23	62	12	28	10	27	91
Ø50	24	M20*P2.5	35	M24*P1.5	13	9	27	94	74	Rc1/4	14	20	34	87	30	10	27	74	14	29	11	28	98
Ø63	33	M27*P3.0	45	M30*P1.5	15.2	11	32	114	89	Rc1/4	16	23	42	94	35	20	32	90	16	31	13	30	107
Ø80	33	M30*P3.5	55	M36*P1.5	15.2	14	37	134	109	Rc3/8	16	23	52	106	40	25	41	110	16	34	17	35	123
Ø100	40	M36*P4.0	70	M48*P1.5	17	14	50	160	129	Rc3/8	18	26	62	114	56	25	44	134	16	34	17	39	131

ACC 配件

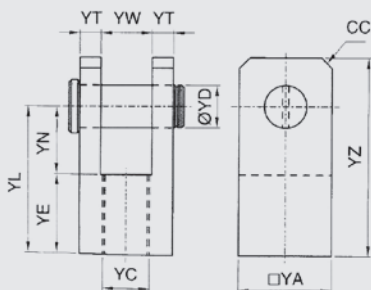
MY



Y 型接頭 (附 PIN) 材質：FCD45

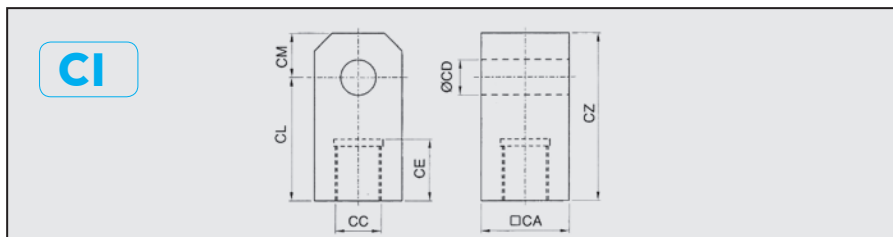
規格	YA	YB	YC	ØYD	YE	YL	YN	YT	YW	YX	YZ
014	29	27.5	M14*P1.5	12	35	56	20	14	16	44	70
016	29	27.5	M16*P1.5	12	35	56	20	14	16	44	70
022	46	37	M22*P1.5	20	36	70	34	14	24	52	93
026	52	42	M26*P1.5	20	35	70	35	15	28	58	96
030	55	42	M30*P1.5	20	41	80	39	20	32	72	107

HY

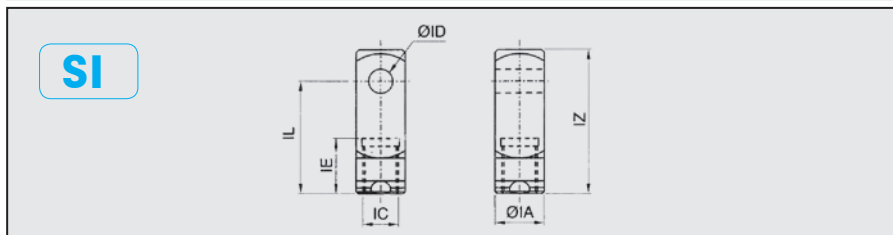


Y 型接頭 (附 PIN) 材質：SS41

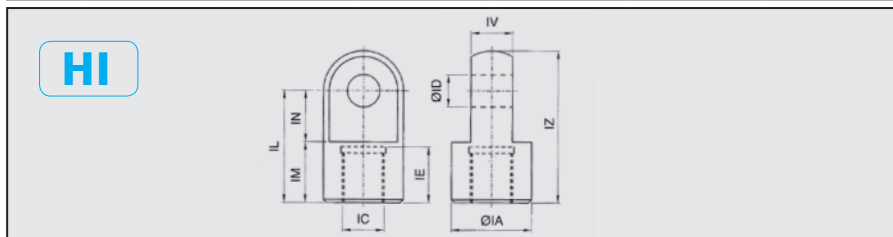
規格	YA	YC	ØYD	YE	YN	YL	YT	YW	YZ	CC
014	32	M14*P1.5	12	36	20	56	8	16	70	6
016	32	M16*P1.5	12	36	20	56	8	16	70	6
018	38	M18*P1.5	16	36	20	56	8	16	70	6
022	44	M22*P1.5	20	38	32	70	10	24	93	10
026	50	M26*P1.5	20	37	33	70	11.5	27	96	10
030	60	M30*P1.5	30	40	48	88	15	30	115	10
040	70	M40*P2.0	35	47	46	93	20	30	127	15
050	80	M50*P2.0	40	50	50	100	22.5	35	140	15
070	115	M70*P2.0	50	60	60	120	27.5	60	170	25
090	150	M90*P2.0	70	85	85	170	40	70	240	30



I 型接頭 材質：SS41							
規格 尺寸	□ CA	CC	ØCD	CE	CL	CM	CZ
026	44.5	M26*P1.5	25	40	60	25	85
030	50.8	M30*P1.5	30	45	70	30	100
040	60	M40*P2.0	30	50	75	30	105
050	70	M50*P2.0	35	55	85	35	120
060	90	M60*P2.0	50	70	105	50	155



I 型接頭 材質：SS41						
規格 尺寸	ØIA	IC	ØID	IE	IL	IZ
014	25.4	M14*P1.5	12	40	57	73
016	25.4	M16*P1.5	12	40	57	73
018	25.4	M18*P1.5	12	40	57	73
022	31.75	M22*P1.5	16	40	59	76



I 型接頭 材質：SS41									
規格 尺寸	ØIA	IC	ØID	IE	IL	IM	IN	IV	IZ
026	50	M26*P1.5	25	40	85	45	40	30	110
030	55	M30*P1.5	25	40	83	45	38	35	110
040	75	M40*P2.0	35	50	90	40	50	45	130
050	90	M50*P2.0	50	60	105	50	55	55	150
070	115	M70*P2.0	60	65	120	65	55	60	177
090	150	M90*P2.0	70	82	180	90	90	70	250

YM

YH

YKH

YS

YR

YCR

YHS

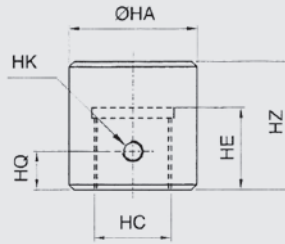
YHR

YT

YMT

ACC

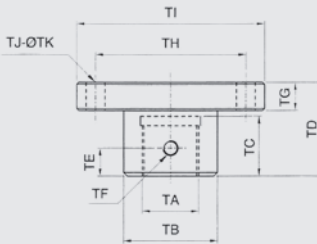
HH



焊套接頭 材質：SS41

規格	尺寸	ØHA	HC	HE	HK	HQ	HZ
010		20	M10*P1.25	20	M6*P10	10	30
014		35	M14*P1.5	25	M8*P1.25	12	40
016		35	M16*P1.5	25	M8*P1.25	12	40
022		40	M22*P1.5	32	M8*P1.25	15	50
026		45	M26*P1.5	32	M8*P1.25	15	50
030		50	M30*P1.5	35	M8*P1.25	20	55
036		55	M36*P2.0	40	M8*P1.25	20	60
040		60	M40*P2.0	48	M10*P1.5	25	65
050		80	M50*P2.0	55	M10*P1.5	25	75
060		90	M60*P2.0	55	M10*P1.5	30	80
070		100	M70*P2.0	65	M12*P1.75	30	100
090		140	M90*P2.0	85	M12*P1.75	40	120

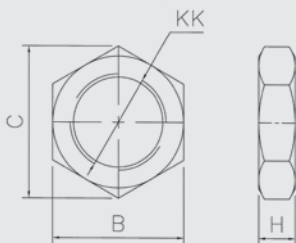
HT



T型接頭 材質：SS41

規格	尺寸	TA	TB	TC	TD	TE	TF	TG	TH	TI	TJ	ØTK
010		M10*P1.25	20	20	30	10	M6*P1.0	8	40	60	4	8
014		M14*P1.5	30	25	40	12	M8*P1.25	10	55	80	4	10
016		M16*P1.5	30	25	40	12	M8*P1.25	10	55	80	4	10
022		M22*P1.5	35	32	50	15	M8*P1.25	15	65	85	4	10
026		M26*P1.5	40	32	50	15	M8*P1.25	15	70	90	4	10
030		M30*P1.5	55	35	55	20	M8*P1.25	20	75	100	4	12
036		M36*P2.0	50	48	55	20	M8*P1.25	20	80	105	4	12
040		M40*P2.0	60	48	65	25	M10*P1.5	25	90	115	6	12
050		M50*P2.0	80	55	75	25	M10*P1.5	25	110	140	6	14
060		M60*P2.0	90	55	80	30	M10*P1.5	30	120	150	6	14
070		M70*P2.0	100	65	100	30	M12*P1.75	30	140	180	6	18
090		M90*P2.0	140	85	120	40	M12*P1.75	40	180	220	6	18

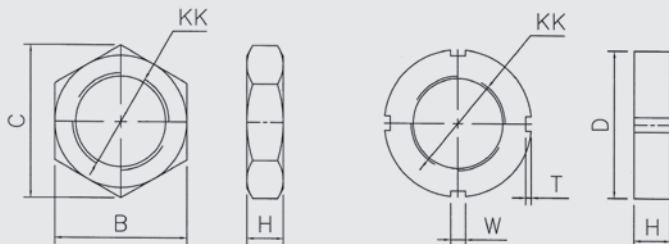
YM



YM 規格螺帽 材質：SS41

KK	B	C	H
M14*P1.5	22	25.4	8
M16*P1.5	24	27.7	8
M22*P1.5	32	37	10
M26*P1.5	36	41.6	12
M30*P1.5	41	47.3	13
M40*P2.0	55	63.5	15

YH



YH 規格螺帽 材質：SS41

KK	B	C	H	D	W	T
M22*P1.5	32	37	10	--	--	--
M26*P1.5	36	41.6	12	--	--	--
M30*P1.5	41	47.3	13	--	--	--
M40*P2.0	55	63.5	15	--	--	--
M50*P2.0	65	75	15	--	--	--
M70*P2.0	--	--	20	95	8	3.5
M90*P2.0	--	--	20	120	10	4

YM

YH

YKH

YS

YR

YCR

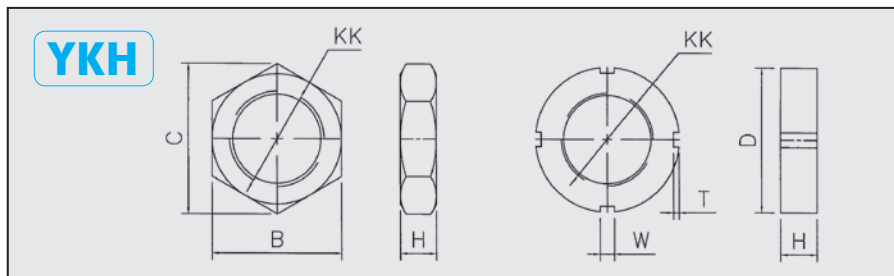
YHS

YHR

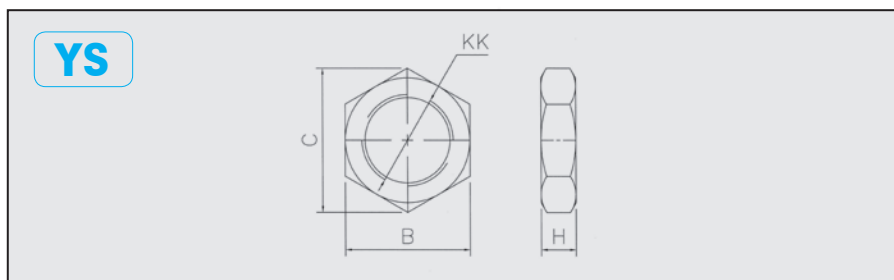
YT

YMT

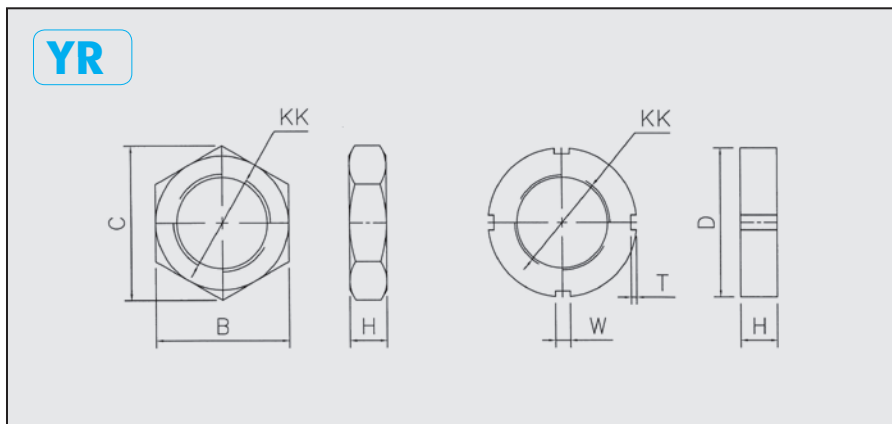
ACC



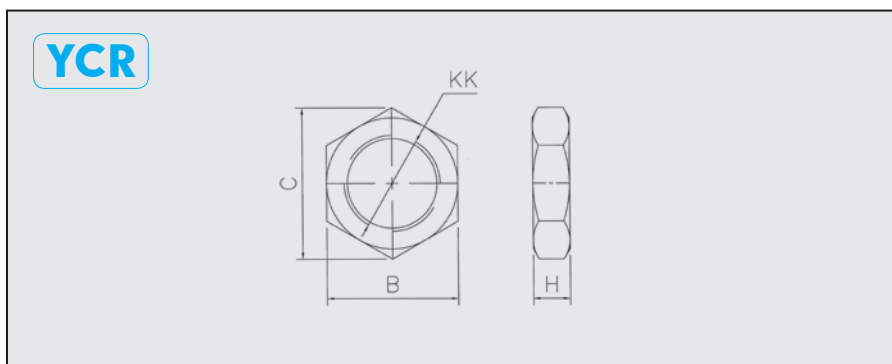
YKH 規格螺帽 材質：SS41						
KK	B	C	H	D	W	T
M16*P1.5	24	27.7	8	--	--	--
M20*P1.5	30	34.6	10	--	--	--
M24*P1.5	36	41.6	12	--	--	--
M30*P2.0	41	47.3	13	--	--	--
M39*P1.5	55	63.5	15	--	--	--
M48*P1.5	65	75	15	--	--	--
M50*P2.0	65	75	15	--	--	--
M60*P2.0	--	--	20	90	7	3
M64*P2.0	--	--	20	95	8	3.5
M72*P2.0	--	--	25	105	8	3.5
M76*P2.0	--	--	30	110	8	3.5
M80*P2.0	--	--	30	115	8	3.5
M95*P2.0	--	--	35	135	10	4
M100*P2.0	--	--	35	150	12	5
M120*P2.0	--	--	40	180	14	6
M130*P2.0	--	--	40	200	16	7



YS 規格螺帽 材質：SS41			
KK	B	C	H
M10*P1.25	17	19.6	8
M14*P1.5	22	25.4	8
M16*P1.5	24	27.7	8
M26*P1.5	36	41.6	12
M30*P1.5	41	47.3	13
M40*P2.0	55	63.5	15



YR 規格螺帽 材質：SS41						
KK	B	C	H	D	W	T
M16*P1.5	24	27.7	8	--	--	--
M22*P1.5	32	37	10	--	--	--
M30*P1.5	41	47.3	13	--	--	--
M40*P2.0	55	63.5	15	--	--	--
M50*P2.0	65	75	15	--	--	--
M60*P2.0	--	--	20	80	7	3
M70*P2.0	--	--	20	95	8	3.5
M90*P2.0	--	--	20	120	10	4
M120*P2.0	--	--	20	150	12	5



YCR 規格螺帽 材質：SS41			
KK	B	C	H
M26*P1.5	36	41.6	12
M30*P1.5	41	47.3	13
M40*P2.0	55	63.5	15
M50*P2.0	65	75	15

YM

YH

YKH

YS

YR

YCR

YHS

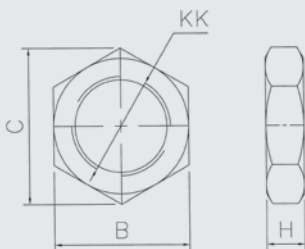
YHR

YT

YMT

ACC

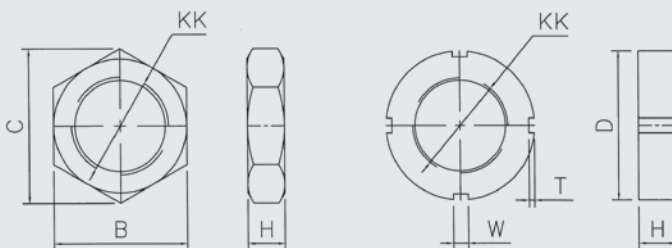
YHS



YHS 規格螺帽 材質：SS41

KK	B	C	H
M22*P1.5	32	37	10
M26*P1.5	36	41.6	12
M30*P1.5	41	47.3	13
M36*P2.0	50	57.7	15
M40*P2.0	55	63.5	15

YHR



YHR 規格螺帽 材質：SS41

KK	B	C	H	D	W	T
M50*P2.0	65	75	15	--	--	--
M70*P2.0	--	--	20	95	8	3.5
M90*P2.0	--	--	30	120	10	4
M100*P2.0	--	--	30	140	12	5
M120*P3.0	--	--	30	160	12	5
M140*P3.0	--	--	35	190	14	6
M160*P4.0	--	--	40	210	16	7
M180*P4.0	--	--	40	230	18	8

YM

YH

YKH

YS

YR

YCR

YHS

YHR

YT

YMT

ACC



永金科技有限公司
YONKEN TECHNOLOGY CO., LTD.

永順興股份有限公司
ZEWAKEN CO., LTD.

📍 台灣台南市安南區安和路二段54巷236號 (和順工業區)
No.236, Ln. 54, Sec. 2, Anho Rd., Annan Dist.,
Tainan City 709, Taiwan.

📞 +886-6-3550610、3554719

☎ +886-6-3567208

🌐 www.yonken.com.tw

✉ yonken@yonken.com.tw

sales@yonken.com.tw